

CONTENTS

DEDICATION	3
SUMMARY OF CRIME IN ILLINOIS.....	5
FREQUENCY OF CRIME	5
STATE OF ILLINOIS	6
CRIME INDEX OFFENSES	7
CRIME INDEX OFFENSE ARRESTS.....	7
CRIMES AGAINST PERSONS.....	8
CRIMES AGAINST PROPERTY.....	9
CORE BASED STATISTICAL AREAS.....	10
SUPPLEMENTAL DATA	
Domestic Crimes.....	11
Crimes Against Children	12
Crimes Against School Personnel	13
Hate Crimes.....	14
LAW ENFORCEMENT EMPLOYEE INFORMATION	15

INTRODUCTION

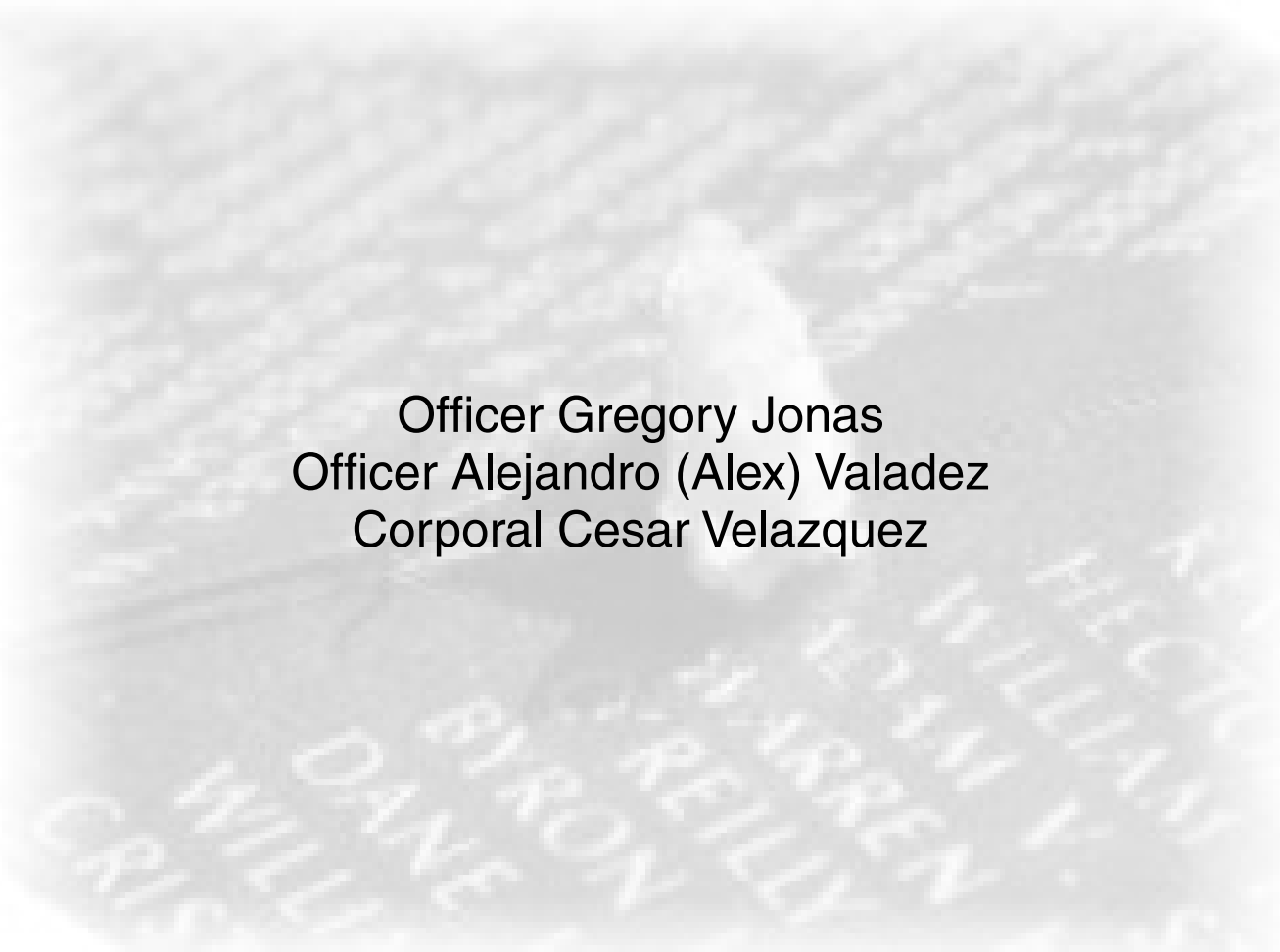
This Executive Summary of the *Crime in Illinois 2009*, annual uniform crime report, is intended to provide readers with a high-level overview of the nature of crime in Illinois. This summary highlights statewide statistics and topics of interest. Detailed statistics and analyses are contained in the complete *Crime in Illinois 2009*, annual uniform crime report, which is available via the internet through the Illinois State Police website at <http://www.isp.state.il.us>.

During 2009, data from 903 agencies was submitted directly to the Illinois Uniform Crime Reporting (I-UCR) Program. The remaining agencies failed to report crime statistics or reported through an intermediary agency (sheriff's office, police department, etc.). A listing of participating agencies and their respective extent of participation is available in the complete publication.

Local law enforcement agencies are mandated by Chapter 20 of the Illinois Compiled Statutes, 2630/8, to report crime index offenses, crime index offense arrests, and drug arrests. The 2008 figures may not reflect the figures published in *Crime in Illinois 2008* due to submission of late and/or adjusted data.

DEDICATION

This report is dedicated to all law enforcement officers, and in particular, to those police officers who lost their lives during the past year in the performance of duty while upholding the laws of the state of Illinois.



Officer Gregory Jonas
Officer Alejandro (Alex) Valadez
Corporal Cesar Velazquez

*“Courage knows no bounds greater than that,
that a man or woman shall give his or her life in the
service of his or her community.”
(Source Unknown)*

SUMMARY OF CRIME IN ILLINOIS

Crime index offenses are considered to be the most serious and the most likely to be reported. The I-UCR crime index offenses and arrests include the categories of murder, criminal sexual assault, robbery, aggravated assault/battery (including attempted murder and ritual mutilation), burglary, theft (including burglary from a motor vehicle), motor vehicle theft, and arson.

In 2009, there were a total of 12,135 monthly crime index offense reports submitted out of the 12,840 to be received annually. The 705 reports that were not submitted may have contributed to the decrease in the number of Index crime offenses and arrests, and drug arrest totals for 2009.

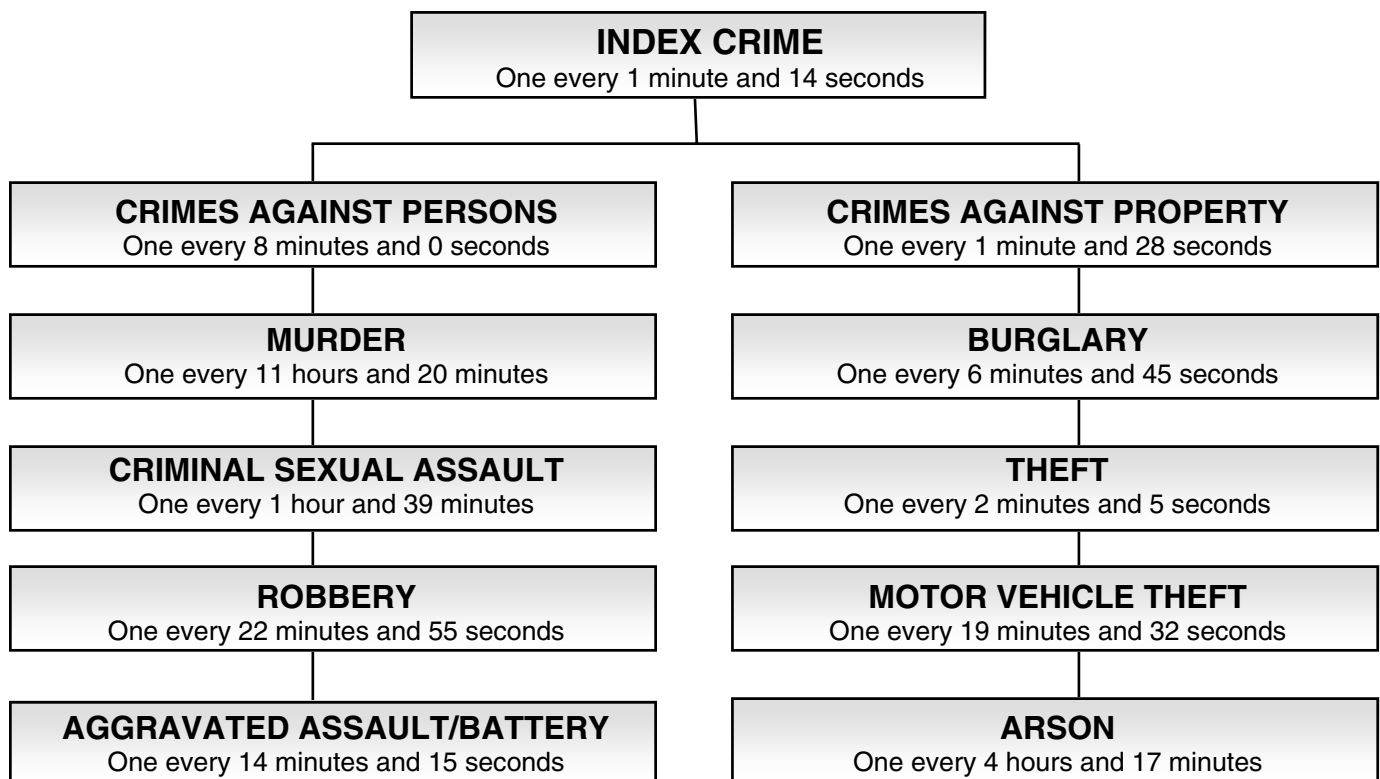
Summary

There were 425,720 crime index offenses reported to the I-UCR Program this year, an average of 1,166 each day, or one every 74 seconds. This is a 7.2 percent decrease from the 458,558 crime index offenses reported last year. The crime index offense rate for 2009 is 3,299.8 per 100,000 inhabitants. This is a 7.5 percent decrease from the 2008 crime rate of 3,567.8 per 100,000 inhabitants.

Arrests

There were 94,975 arrests in 2009 for crime index offenses. This is a 3.7 percent decrease from the 98,584 arrests reported in 2008. The crime index offense arrest rate for 2009 is 736.2 per 100,000 inhabitants.

FREQUENCY OF CRIME



STATE OF ILLINOIS

Law Enforcement Employee Information:	Female	Male	Total	2009 Population	12,901,563
Sworn Full-Time	5,379	28,650	34,029	2008 Population	12,852,548
Civilian Full-Time	6,849	6,453	13,302		
Sworn Part-Time	187	3,326	3,513		
Auxiliary Officers	187	1,733	1,920		
Total*	12,602	40,162	52,764		

* Police Departments, Sheriffs' Offices, Colleges and Universities, Secretary of State only.

CRIME INDEX OFFENSES / CRIME RATE COMPARISON 2009/2008

Year	Total Crime Index Offenses	Murder	Criminal Sexual Assault	Robbery	Aggravated Assault / Battery	Burglary	Theft	Motor Vehicle Theft	Arson
2009	425,720	773	5,316	22,940	36,700	77,850	253,184	26,917	2,040
2008	458,558	791	5,646	24,140	39,134	79,260	274,707	32,784	2,096
% Chg	-7.2%	-2.3%	-5.8%	-5.0%	-6.2%	-1.8%	-7.8%	-17.9%	-2.7%
2009	(3,299.8)	(6.0)	(41.2)	(177.8)	(284.5)	(603.4)	(1,962.4)	(208.6)	(15.8)
2008	(3,567.8)	(6.2)	(43.9)	(187.8)	(304.5)	(616.7)	(2,137.4)	(255.1)	(16.3)
% Chg	(-7.5%)	(-3.2%)	(-6.2%)	(-5.3%)	(-6.6%)	(-2.2%)	(-8.2%)	(-18.2%)	(-3.1%)

Rate per 100,000 is in parentheses.

CRIME INDEX OFFENSES / ARREST RATE COMPARISON 2009/2008

Year	Total Crime Index Offenses	Murder	Criminal Sexual Assault	Robbery	Aggravated Assault / Battery	Burglary	Theft	Motor Vehicle Theft	Arson
2009	94,975	618	1,272	4,800	16,075	10,010	56,952	4,950	298
2008	98,584	595	1,458	4,914	17,227	10,710	57,526	5,742	412
% Chg	-3.7%	3.9%	-12.8%	-2.3%	-6.7%	-6.5%	-1.0%	-13.8%	-27.7%
2009	(736.2)	(4.8)	(9.9)	(37.2)	(124.6)	(77.6)	(441.4)	(38.4)	(2.3)
2008	(767.0)	(4.6)	(11.3)	(38.2)	(134.0)	(83.3)	(447.6)	(44.7)	(3.2)
% Chg	(-4.0%)	(4.3%)	(-12.4%)	(-2.6%)	(-7.0%)	(-6.8%)	(-1.4%)	(-14.1%)	(-28.1%)

Rate per 100,000 is in parentheses.

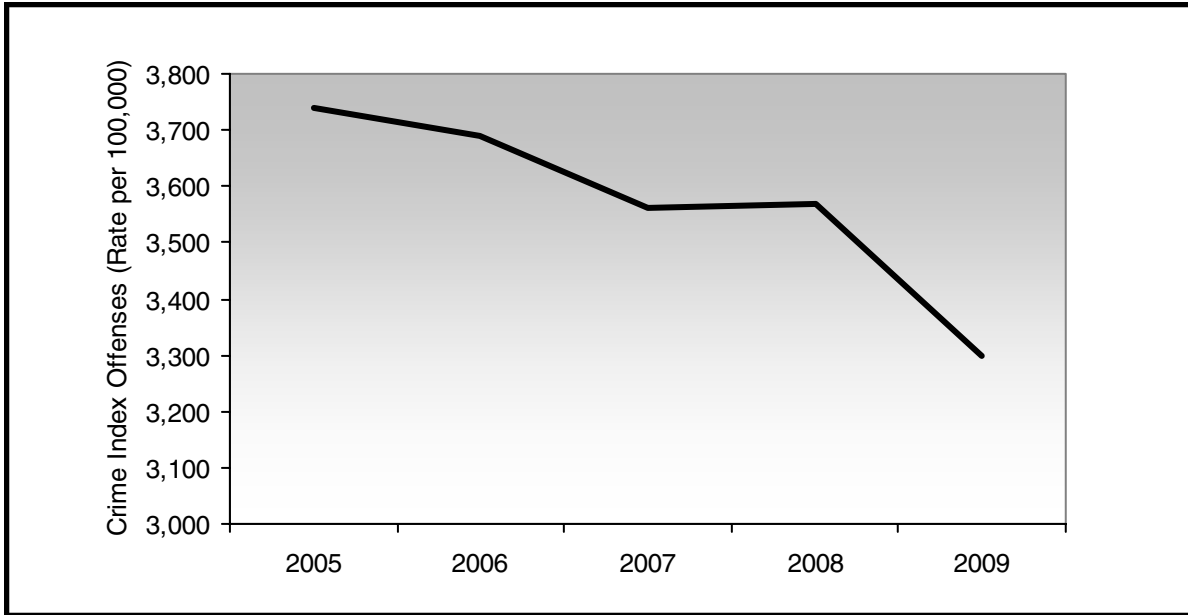
DRUG CRIME ARREST COMPARISON 2009/2008

Year	Rate per 100,000	Total Drug Arrests	Cannabis Control Act	Controlled Substances Act	Hypodermic Syringes & Needles Act	Drug Paraphernalia Act
2009	742.7	95,824	51,640	29,379	668	14,137
2008	769.7	98,924	50,738	32,492	556	15,138
% Chg	-3.5%	-3.1%	1.8%	-9.6%	20.1%	-6.6%

SUPPLEMENTAL DATA - TOTAL OFFENSES REPORTED 2009/2008

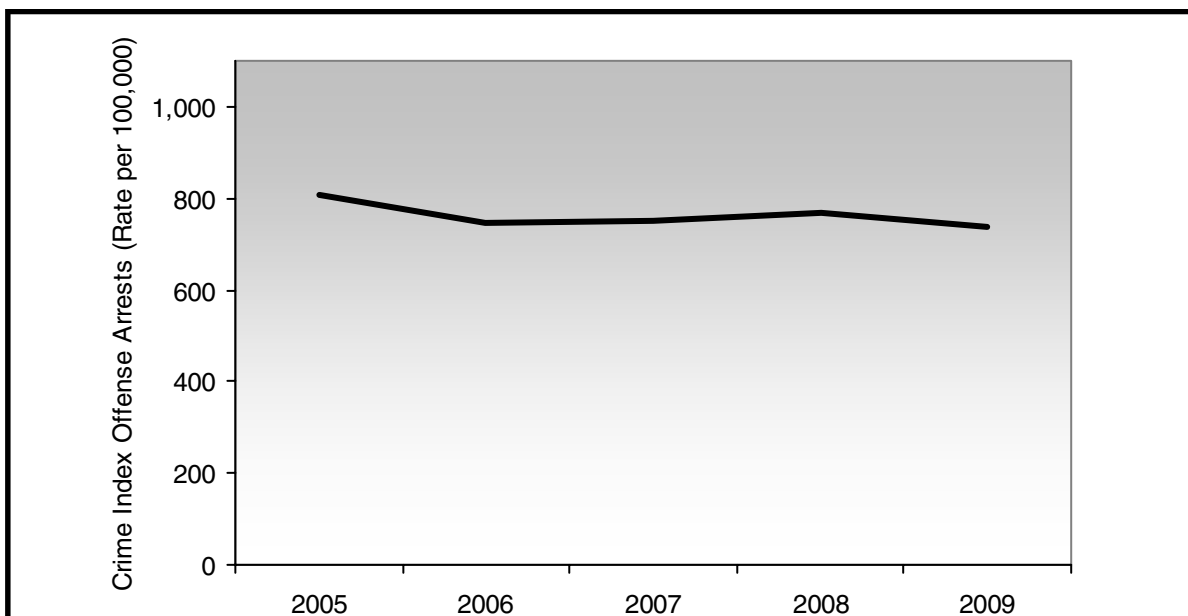
Year	Crimes Against School Personnel	Crimes Against Children	Domestic Crimes	Hate Crimes
2009	2,930	29,724	115,988	155
2008	3,457	32,532	109,142	176
% Chg	-15.2%	-8.6%	6.3%	-11.9%

CRIME INDEX OFFENSES

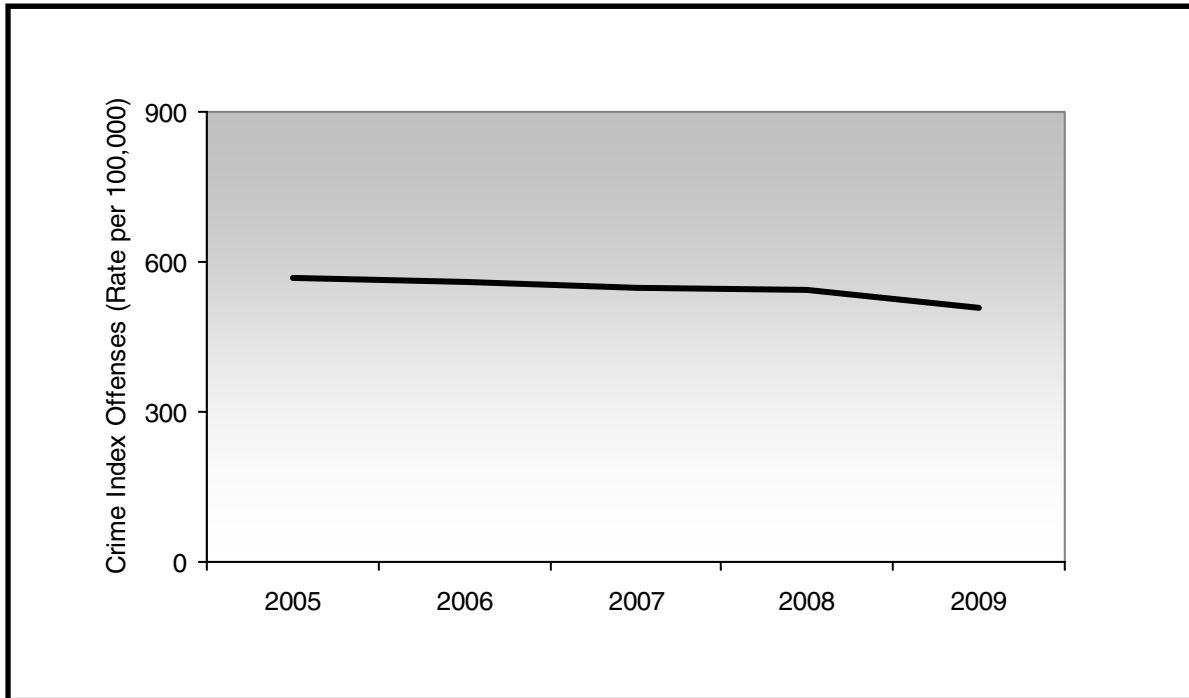


Crime Index Offenses	2005	2006	2007	2008	2009
Number of Offenses	475,497	470,730	457,071	458,558	425,720
Percent Change from Previous Year	-2.3%	-1.0%	-2.9%	0.3%	-7.2%
Rate per 100,000 Inhabitants	3,740.1	3,688.1	3,562.0	3,567.8	3,299.8
Number of Arrests	102,905	95,404	96,128	98,584	94,975
Percent Change from Previous Year	-1.6%	-7.3%	0.8%	2.6%	-3.7%
Rate per 100,000 Inhabitants	809.4	747.5	749.1	767.0	736.2

CRIME INDEX OFFENSE ARRESTS



CRIMES AGAINST PERSONS



Definition: The crime index offenses of murder, criminal sexual assault, robbery, and aggravated assault/battery (including attempted murder and ritual mutilation) comprise the general category of crimes against persons.

Crime Against Persons Offenses	2005	2006	2007	2008	2009
Number of Offenses	72,348	71,678	70,309	69,711	65,729
Percent Change from Previous Year	1.7%	-0.9%	-1.9%	-0.9%	-5.7%
Rate per 100,000 Inhabitants	569.1	561.6	547.9	542.3	509.4

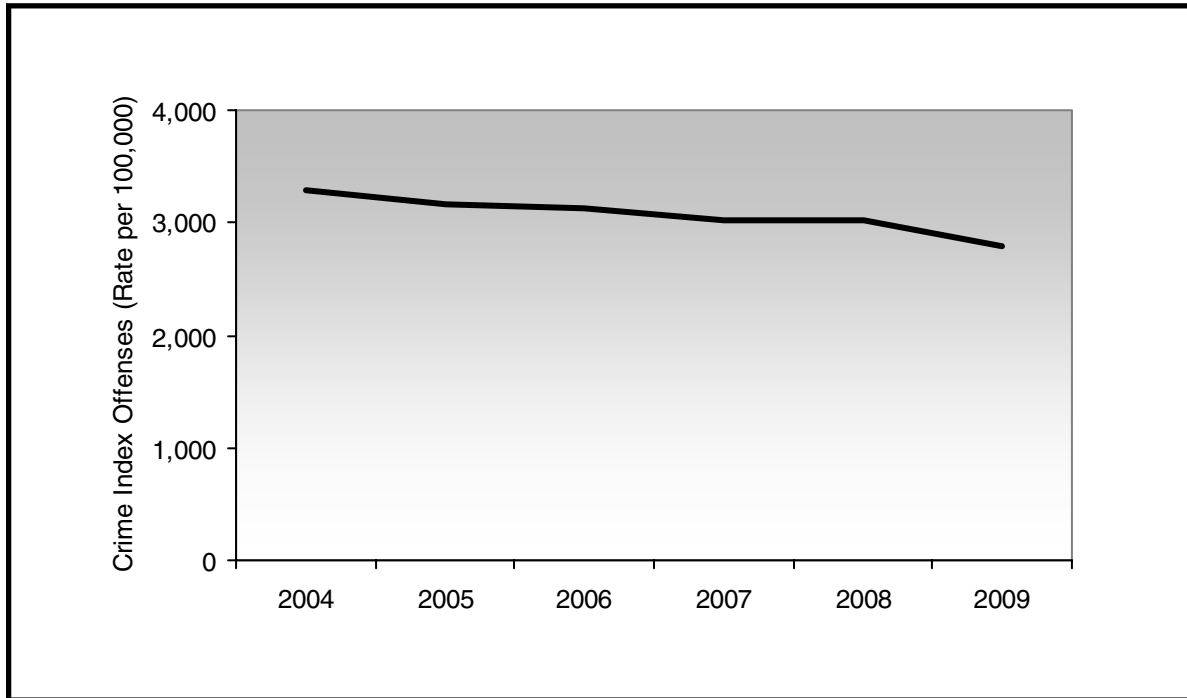
Summary

There were 65,729 crimes against persons offenses reported to the I-UCR Program this year, an average of 180 each day, or one every 8 minutes and 0 seconds. This is a 5.7 percent decrease from the 69,711 offenses reported last year. The crimes against persons offense rate for 2009 is 509.4 per 100,000 inhabitants.

Arrests

There were 22,765 arrests this year for crimes against persons offenses. This is a 5.9 percent decrease from the 24,194 arrests reported last year. The crimes against persons offense arrest rate for 2009 is 176.4 per 100,000 inhabitants.

CRIMES AGAINST PROPERTY



Definition: The crime index offenses of burglary, theft (including burglary from a motor vehicle), motor vehicle theft, and arson comprise the general category of crimes against property.

Crimes Against Property Offenses	2005	2006	2007	2008	2009
Number of Offenses	403,149	399,052	386,762	388,847	359,991
Percent Change from Previous Year	-2.9%	-1.0%	-3.1%	0.5%	-7.4%
Rate per 100,000 Inhabitants	3,171.0	3,126.5	3,014.1	3,025.45	2,790.2

Summary

There were 359,991 crimes against property offenses reported to the I-UCR Program this year, an average of 986 each day, or one every 1 minute and 28 seconds. This is a 7.4 percent decrease from the 388,847 offenses reported last year. The crimes against property index offense rate for 2009 is 2,790.2 per 100,000 inhabitants.

Arrests

There were 72,210 arrests this year for crimes against property offenses. This is a 2.9 percent decrease from the 74,390 arrests reported last year. The crimes against property index offense rate for 2009 is 559.7 per 100,000 inhabitants.

CORE BASED STATISTICAL AREAS

The United States Office of Management and Budget developed new standards to define Core Based Statistical Areas (CBSAs) beginning in 2003. These standards replace and supersede the 1990 standards for defining Metropolitan Statistical Areas.

CBSAs are defined as a statistical geographic entity consisting of the county or counties associated with at least one core (urbanized area or urban cluster) of at least 10,000 population, plus adjacent counties having a high degree of social and economic integration with the core as measured through commuting ties with the counties containing the core. The new standards designate and define two categories of CBSAs: Metropolitan Statistical Areas and Micropolitan Statistical Areas. These are the terms used for the basic set of county-based areas as defined under this classification.

Metropolitan Statistical Areas have at least one urbanized area of 50,000 or more population, plus adjacent territory that has a high degree of social and economic integration with the core as measured by commuting ties. Micropolitan Statistical Areas—a new set of statistical areas—have at least one urban cluster of at least 10,000 but less than 50,000 population, plus adjacent territory that has a high degree of social and economic integration with the core as measured by commuting ties. If the specified criteria are met, a Metropolitan Statistical Area containing a single core with a population of 2.5 million or more may be subdivided to form smaller groupings of counties referred to as Metropolitan Divisions. Counties that do not fall within CBSAs represent Outside Core Based Statistical Areas.

There are 11 Metropolitan Statistical Areas that include 36 counties in Illinois. Inhabitants of the Metropolitan Statistical Areas account for 87.3 percent of the state’s population and 91.0 percent of the Illinois crime index offenses. There are 23 Micropolitan Statistical Areas that include 29 counties in Illinois. Inhabitants of the Micropolitan Statistical Areas account for 8.2 percent of the state’s population and 6.6 percent of the Illinois crime index offenses. There are 37 counties that comprise the Outside Core Based Statistical Areas in Illinois. Inhabitants of the Outside Core Based Statistical Areas account for 4.9 percent of the state’s population and 2.4 percent of the Illinois crime index offenses. In some cases the percentages may not sum to 100 due to rounding.

Six of Illinois’ Metropolitan and Micropolitan Statistical Areas are part of areas in Indiana, Iowa, Kentucky, Missouri, and Wisconsin. Areas outside of Illinois are not represented in the statistics presented here.

CBSA Category	2009 Population	Total Crime Index Offenses	Crime Rate per 100,000	Violent Crime Index Offenses	Property Crime Index Offenses
Metropolitan Statistical Areas	11,266,496	387,398	3,438.5	60,394	327,004
Micropolitan Statistical Areas	1,061,834	28,203	2,656.1	3,459	24,744
Total Metro– and Micropolitan Statistical Areas	12,328,330	415,601	3,371.1	63,853	351,748
Outside Core Based Statistical Areas	627,256	10,117	1,612.9	1,878	8,239

SUPPLEMENTAL DATA

In April 1996, the I-UCR Program began collecting additional crime information. This data includes statistics pertaining to offenses mandated by state statutes and offenses concerning children. Due to limitations of agencies' reporting systems, all agencies are not included in the totals presented in the following tables. In some cases, the percentages may not sum to 100 due to rounding.

DOMESTIC CRIMES

The reporting of domestic-related offenses is mandated by Chapter 20 of the Illinois Compiled Statutes, 2630/5.1. Domestic-related offenses is defined as any crime committed where a domestic relationship exists between the victim and offender. Domestic relationship is defined as family or household members, including spouses, former spouses, parents, children, stepchildren, and other persons related by blood or by present or previous marriage, persons who share or formerly shared a common dwelling, persons who have or allegedly have a child in common, persons who have or have had a dating or engagement relationship, and persons with disabilities and their personal care assistants or care givers outside the context of an employee of a public or private care facility.

Summary

There were 115,988 domestic-related offenses reported to the I-UCR Program this year, an average of 317 each day, or one every 4 minutes and 31 seconds. This is a 6.3 percent increase from the 109,142 domestic-related offenses reported last year. The domestic-related offense rate is 899.0 per 100,000 inhabitants.

Family Related			
Relationship Type	Group Percent	Relationship	Percent of Total
Marital	38.9%	Spouse	34.8%
		Ex-Spouse	4.1%
Parental/Child	39.2%	Parent	17.5%
		Step-Parent	1.6%
		Grandparent	1.0%
		Child	14.9%
		Step-child	1.9%
		Grandchild	0.6%
		Child of Boyfriend/Girlfriend	1.7%
Other Family	21.8%	Sibling	12.6%
		Step-sibling	0.5%
		In-law	1.7%
		Other Family	7.0%

Other Domestic Related	
Relationship Type	Percent of Total
Boyfriend/Girlfriend	75.3%
Same Sex Relationship	1.6%
Child in Common with Offender	8.8%
Friend**	2.8%
Otherwise Known***	11.5%

**Includes roommates.

***Includes personal care assistants.

*Due to software issues, the 'Relationship Type' is unavailable from Chicago Police Department data and is not represented in the 'Domestic Crimes by Relationship' tables.

SUPPLEMENTAL DATA

CRIMES AGAINST CHILDREN

Although reporting in this category is not mandated by state statutes, information is voluntarily submitted by agencies providing statistics used in researching the type and frequency of offenses committed against victims aged 16 years and younger.

Summary

There were 29,724 crimes against children reported to the I-UCR Program this year, an average of 81 each day, or one every 17 minutes and 40 seconds. This is a 8.6 percent decrease from the 32,532 crimes reported last year. The crimes against children offense rate is 230.3 per 100,000 inhabitants.

OFFENSE TYPE BY VICTIM AGE GROUP

Crime by Category	Ages Under 1 to 5 Years	% of Category Total	Ages 6 to 12 Years	% of Category Total	Ages 13 to 16 Years	% of Category Total	Age Unknown	% of Category Total	Total Under 1 to 16 Years	% of Total (29,724)
Murder	11	22.0%	12	24.0%	27	54.0%	0	0.0%	50	0.2%
Criminal Sexual Assault	202	18.7%	330	30.5%	549	50.8%	0	0.0%	1,081	3.6%
Robbery	30	1.7%	226	13.2%	1,450	84.5%	9	0.5%	1,715	5.8%
Aggravated Assault/ Battery	176	5.8%	615	20.2%	2,225	73.1%	28	0.9%	3,044	10.2%
Assault/Battery	705	4.9%	3,526	24.4%	10,166	70.4%	51	0.4%	14,448	48.6%
Burglary	50	18.5%	53	19.6%	156	57.6%	12	4.4%	271	0.9%
Theft	52	2.7%	364	19.1%	1,447	75.9%	43	2.3%	1,906	6.4%
Theft/Burglary From a Motor Vehicle	0	0.0%	0	0.0%	26	100.0%	0	0.0%	26	0.1%
Motor Vehicle Theft	5	35.7%	1	7.1%	4	28.6%	4	28.6%	14	0.0%
Arson	15	34.1%	11	25.0%	13	29.5%	5	11.4%	44	0.1%
Sex Offense	241	17.3%	437	31.4%	709	50.9%	5	0.4%	1,392	4.7%
Offenses Involving Children	1,398	49.8%	962	34.3%	418	14.9%	30	1.1%	2,808	9.4%
Disorderly Conduct	52	5.0%	179	17.1%	812	77.6%	3	0.3%	1,046	3.5%
Intimidation	2	3.6%	20	36.4%	33	60.0%	0	0.0%	55	0.2%
Kidnapping	142	29.5%	179	37.2%	148	30.8%	12	2.5%	481	1.6%
Deadly Weapon	5	10.9%	4	8.7%	29	63.0%	8	17.4%	46	0.2%
Violation of Orders of Protection	56	24.3%	70	30.4%	103	44.8%	1	0.4%	230	0.8%
All Other Offenses	139	13.0%	205	19.2%	544	51.0%	179	16.8%	1,067	3.6%
TOTAL	3,281	11.0%	7,194	24.2%	18,859	63.4%	390	1.3%	29,724	100.0%

SUPPLEMENTAL DATA

CRIMES AGAINST SCHOOL PERSONNEL

The reporting of attacks on school personnel is mandated by Chapter 105 of the Illinois Compiled Statutes, 5/10-21.7. The I-UCR Program collects reports of aggravated battery and aggravated assault committed against teachers, administrative personnel, or educational support personnel. This includes teacher’s aides, bus drivers, or janitors, etc., who are employed by the school.

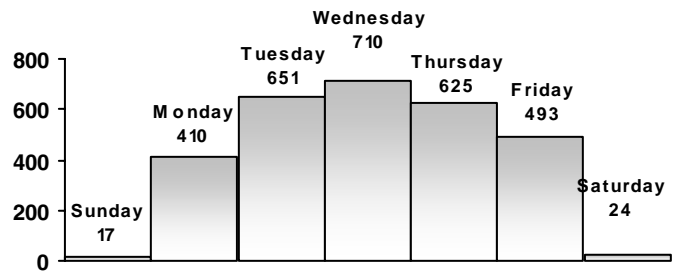
Summary

There were 2,930 crimes against school personnel reported to the I-UCR Program this year, an average of 8 each day, or one every 48 minutes and 50 seconds. This is a 15.2 percent decrease from the 3,457 crimes reported last year. The crimes against school personnel offense rate is 22.7 per 100,000 inhabitants.

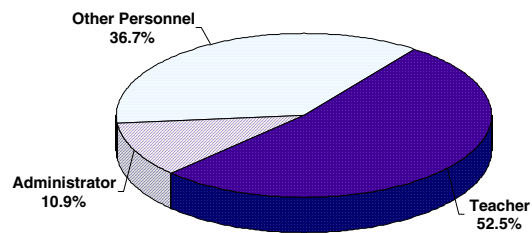
OFFENSE TYPE BY CRIME CATEGORY

Crime by Category	Number of Offenses	Percent of Total
Murder	0	0.0%
Criminal Sexual Assault	0	0.0%
Robbery	1	0.0%
Aggravated Assault/Battery	2,377	81.1%
Simple Assault/Battery	351	12.0%
Burglary	1	0.0%
Theft	52	1.8%
Theft/Burglary From a Motor Vehicle	0	0.0%
Motor Vehicle Theft	0	0.0%
Arson	0	0.0%
Sex Offenses	1	0.0%
Offenses Involving Children	0	0.0%
Disorderly Conduct	83	2.8%
Intimidation	1	0.0%
Kidnapping	0	0.0%
Deadly Weapon	33	1.1%
Violation of Orders of Protection	0	0.0%
All Other Offenses	29	1.0%
TOTAL	2,930	100.0%

OFFENSES BY DAY OF OCCURRENCE



OFFENSES BY VICTIM TYPE*



*Due to software issues, the 'Victim Type' is unavailable from Chicago Police Department data and is not represented in the 'Offenses by Victim Type' chart.

SUPPLEMENTAL DATA

HATE CRIMES

The reporting of hate crime information is mandated by Chapter 20 of the Illinois Compiled Statutes, 2605/390(a) and the Federal Hate Crime Act. A hate crime is committed when, by reason of the actual or perceived race, color, creed, religion, ancestry, gender, sexual orientation, physical or mental stability, or national origin of another individual or group of individuals, a person commits assault, battery, aggravated assault, misdemeanor theft, criminal trespass to residence, misdemeanor criminal damage to property, criminal trespass to vehicle, criminal trespass to real property, mob action, or disorderly conduct.

Summary

This year, 155 hate crime offenses were reported through the I-UCR Program. These offenses were committed by 249 offenders. This is a 11.9 percent decrease from the 176 offenses reported last year. Multiple victims and/or offenses may be reported within a single incident. The following table depicts hate crime data by victim, offender race, and bias motivation.

OFFENSE TYPE BY CATEGORY

Hate Crime Offenses by Type of Victim		
Type of Victim	Number of Offenses	Percent of Total
Business	7	4.5%
Government	2	1.3%
Individual	139	89.7%
Other	4	2.6%
Religious Organization	3	1.9%
TOTAL	155	100.0%

Hate Crime Offenses by Offender Race		
Offender's Race	Number of Offenders	Percent of Total
Asian/Pacific Islander	1	0.4%
Black	68	27.3%
Multi-Racial Group	51	20.5%
Unknown	21	8.4%
White	108	43.4%
TOTAL	249	100.0%

Bias Motivation Totals		
Bias Motivation	Number of Offenses	Percent of Total
Anti-Arab	1	0.6%
Anti-Asian/Pacific Islander	4	2.6%
Anti-Black	66	42.3%
Anti-Catholic	2	1.3%
Anti-Female	2	1.3%
Anti-Female Homosexual (Lesbian)	1	0.6%
Anti-Heterosexual	1	0.6%
Anti-Hispanic	8	5.2%
Anti-Homosexual (Gay & Lesbian)	1	0.6%
Anti-Islamic (Muslim)	2	1.3%
Anti-Jewish	23	14.8%
Anti-Male Homosexual (Gay)	18	11.6%
Anti-Mental	1	0.6%
Anti-Multi-Racial Group	6	3.9%
Anti-Other Ethnicity/Nat'l Origin	3	1.9%
Anti-White	16	10.3%
TOTAL	155	100.0%

LAW ENFORCEMENT EMPLOYEE INFORMATION

Sworn & Civilian Full-Time Law Enforcement Employees by Agency Type					
Sworn & Civilian Full-Time Employees	Police Departments	Sheriff's Offices	Miscellaneous Agencies	Total	Percent of Total
0 - 10	435	11	37	483	48.7%
11- 50	227	57	40	324	32.7%
51- 200	106	26	11	143	14.4%
201 +	31	8	3	42	4.2%
TOTAL	799	102	91	992	100.0%

Statewide

The statewide total number of law enforcement personnel in Illinois for 2009 is 57,698. The 41,109 part- and full-time sworn officers in 2009 account for 71.1 percent of the entire state of Illinois' law enforcement work force. The 2009 rate of sworn employees to population for Illinois is 3.2 per 1,000 inhabitants. The 14,721 civilian employees comprise 25.5 percent of the entire state of Illinois law enforcement community's work force, with an employment rate of 1.1 per 1,000 inhabitants. The 1,958 auxiliary officers (officers not on active duty but subject to call in an emergency situation) in 2009 account for 3.4 percent of the entire state of Illinois law enforcement community's work force, with an employment rate of 0.2 per 1,000 inhabitants.

Police Departments

Police departments employed 36,483 law enforcement employees statewide in 2009 accounting for 63.2 percent of the state law enforcement employee total. Part- and full-time sworn officers account for 83.8 percent (30,586) of the police department work force. The 2009 employment rate for sworn employees of police departments is 2.8 per 1,000 inhabitants. The 4,703 civilian employees comprise 12.9 percent of the police department work force, with an employment rate of 0.4 per 1,000 inhabitants. The 1,194 auxiliary officers in 2009 comprise 3.3 percent of the police department work force, with an employment rate of 0.1 per 1,000 inhabitants.

Sheriffs' Offices

Sheriffs' offices employed 14,694 law enforcement employees statewide in 2009 accounting for 25.5 percent of the state law enforcement employee total. The 5,902 part- and full-time sworn officers in 2009 account for 40.2 percent of the sheriffs' offices work force. The 2009 employment rate for sworn employees of sheriffs' offices is 2.9 per 1,000 inhabitants. The 8,104 civilian employees comprise 55.2 percent of the sheriffs' offices work force, with an employment rate of 4.7 per 1,000 inhabitants. The 688 auxiliary officers in 2009 comprise 4.7 percent of the sheriffs' offices work force, with an employment rate of 0.3 per 1,000 inhabitants.

Miscellaneous Agencies

Miscellaneous agencies employed 6,521 law enforcement employees statewide in 2009 accounting for 11.3 percent of the state law enforcement employee total. Miscellaneous agencies reported 4,531 part- and full-time sworn officers in 2009 accounting for 69.5 percent of the miscellaneous agencies work force. These agencies include airports, colleges and universities, fire departments and arson investigations, forest preserves, hospitals, other agencies, park districts, and railroads. Since miscellaneous agencies do not have a population, employment rates cannot be calculated. The 1,914 civilian employees comprise 29.4 percent of the miscellaneous agencies work force. The 76 auxiliary officers in 2009 comprise 1.2 percent of the miscellaneous agencies work force.

Inquiries on the data presented in this
publication may be directed to:

Illinois State Police
Illinois Uniform Crime Reporting Program
801 South 7th Street, Suite 300-A
P.O. Box 19461
Springfield, IL 62794
217/557-6482

Internet Address:
<http://www.isp.state.il.us>
<http://www.illinois.gov>