

# CONTENTS

DEDICATION .....	3
SUMMARY OF CRIME IN ILLINOIS.....	5
FREQUENCY OF CRIME .....	5
STATE OF ILLINOIS .....	6
CRIME INDEX OFFENSES .....	7
CRIME INDEX OFFENSE ARRESTS.....	7
VIOLENT CRIME .....	8
PROPERTY CRIME .....	9
CORE BASED STATISTICAL AREAS.....	10
<b>SUPPLEMENTAL DATA</b>	
Domestic Crimes .....	11
Crimes Against Children .....	12
Crimes Against School Personnel .....	13
Hate Crimes.....	14
LAW ENFORCEMENT EMPLOYEE INFORMATION .....	15

## INTRODUCTION

This Executive Summary of the *Crime in Illinois 2006*, Annual Uniform Crime Report, is intended to provide readers with a high-level overview of the nature of crime in Illinois. This summary highlights statewide statistics and topics of interest. Detailed statistics and analyses are contained in the complete *Crime in Illinois 2006*, Annual Uniform Crime Report, which is available via the internet through the Illinois State Police website at <http://www.isp.state.il.us>.

During 2006, 972 agencies submitted data directly to the Illinois Uniform Crime Reporting (I-UCR) Program. The remaining agencies reported their crime statistics through an intermediary agency (sheriff's office, police department, etc.). A complete listing of agencies that participated and their respective extent of participation is available in the complete publication.

Local law enforcement agencies are mandated by Chapter 20 of the Illinois Compiled Statutes, 2630/8, to report crime index offenses, crime index offense arrests, and drug arrests. The 2005 figures may not reflect the figures published in *Crime in Illinois 2005* due to submission of late and/or adjusted data.



# DEDICATION

This report is dedicated to all law enforcement officers, and in particular, to those police officers who lost their lives during the past year in the performance of duty while upholding the laws of the state of Illinois.

Police Officer Jeremy Chambers  
Police Officer Thomas A. Cook  
Deputy Sheriff Elizabeth Edwards  
Chief Deputy Brian Gibbons  
Patrol Officer James E. Knapp  
Sergeant Rodney Todd Miller  
Police Officer Eric Solorio  
Police Officer Thomas T. Woods

*“Courage knows no bounds greater than that,  
that a man or woman shall give his or her life in the  
service of his or her community.”  
(Source Unknown)*



# SUMMARY OF CRIME IN ILLINOIS

Crime index offenses are considered to be the most serious and the most likely to be reported, and are used nationally as the standard base for comparisons. The I-UCR crime index offenses and crime index offense arrests include the categories of murder, criminal sexual assault, robbery, aggravated assault/battery (including attempted murder and ritual mutilation), burglary, theft (including burglary from a motor vehicle), motor vehicle theft, and arson.

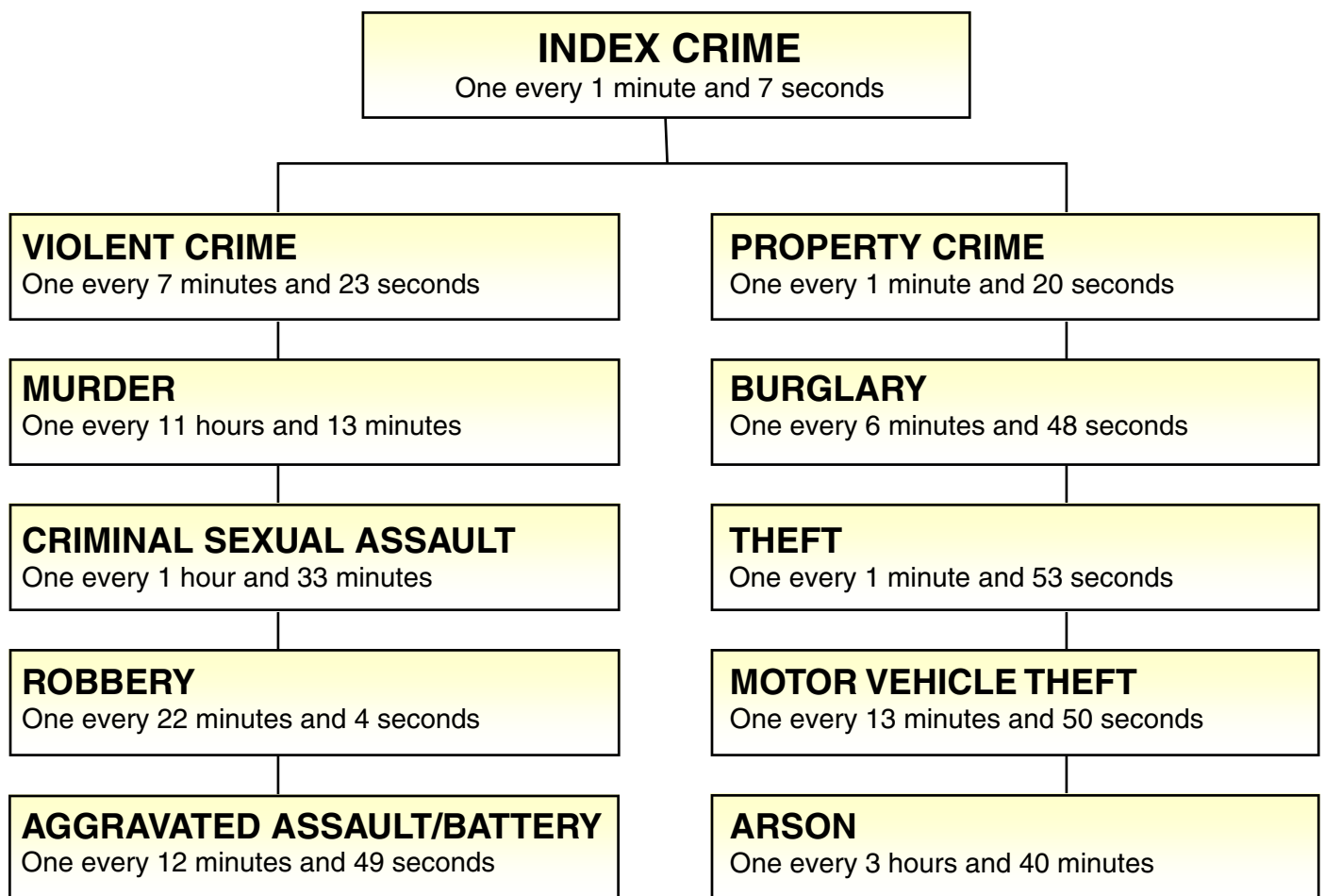
## Summary

There were 467,372 crime index offenses reported to the I-UCR Program this year, an average of 1,280 each day, or one every 67 seconds. This is a 1.7 percent decrease from the 475,497 crime index offenses reported last year. The crime index offense rate for 2006 is 3,661.8 per 100,000 inhabitants.

## Arrests

There were 95,351 arrests in 2006 for crime index offenses. This is a 7.3 percent decrease from the 102,905 arrests reported in 2005. The crime index offense arrest rate for 2006 is 747.1 per 100,000 inhabitants.

## FREQUENCY OF CRIME



# STATE OF ILLINOIS

<b>Law Enforcement Employee Information:</b>	<b>Female</b>	<b>Male</b>	<b>Total</b>	<b>2006 Population</b>	<b>12,763,371</b>
Sworn Full-Time	5,536	29,527	35,063	<b>2005 Population</b>	<b>12,713,634</b>
Civilian Full-Time	6,875	6,401	13,276		
Sworn Part-Time	231	3,558	3,789		
Auxiliary Officers	244	2,081	2,325		
<b>Total*</b>	<b>12,886</b>	<b>41,567</b>	<b>54,453</b>		

\*Police Departments, Sheriff's Offices, Colleges & Universities, Secretary of State only.

## CRIME INDEX OFFENSES / CRIME RATE COMPARISON 2006/2005

Year	Total Crime Index Offenses	Murder	Criminal Sexual Assault	Robbery	Aggravated Assault / Battery	Burglary	Theft	Motor Vehicle Theft	Arson
2006	467,372	780	5,646	23,816	40,984	77,259	278,485	38,018	2,384
2005	475,497	770	6,017	23,283	42,278	77,635	283,312	39,739	2,463
% Chg	-1.7%	1.3%	-6.2%	2.3%	-3.1%	-0.5%	-1.7%	-4.3%	-3.2%
2006	(3,661.8)	(6.1)	(44.2)	(186.6)	(321.1)	(605.3)	(2,181.9)	(297.9)	(18.7)
2005	(3,740.1)	(6.1)	(47.3)	(183.1)	(332.5)	(610.6)	(2,228.4)	(312.6)	(19.4)
% Chg	(-2.1%)	(0.0%)	(-6.6%)	(1.9%)	(-3.4%)	(-0.9%)	(-2.1%)	(-4.7%)	(-3.6%)

Rate per 100,000 is in parentheses.

## CRIME INDEX OFFENSES / ARREST RATE COMPARISON 2006/2005

Year	Total Crime Index Offenses	Murder	Criminal Sexual Assault	Robbery	Aggravated Assault / Battery	Burglary	Theft	Motor Vehicle Theft	Arson
2006	95,351	529	1,501	5,250	18,313	10,711	51,229	7,365	453
2005	102,905	631	1,693	5,086	19,460	10,413	56,441	8,637	544
% Chg	-7.3%	-16.2%	-11.3%	3.2%	-5.9%	2.9%	-9.2%	-14.7%	-16.7%
2006	(747.1)	(4.1)	(11.8)	(41.1)	(143.5)	(83.9)	(401.4)	(57.7)	(3.5)
2005	(809.4)	(5.0)	(13.3)	(40.0)	(153.1)	(81.9)	(443.9)	(67.9)	(4.3)
% Chg	(-7.7%)	(-18.0%)	(-11.3%)	(2.8%)	(-6.3%)	(2.4%)	(-9.6%)	(-15.0%)	(-18.6%)

Rate per 100,000 is in parentheses.

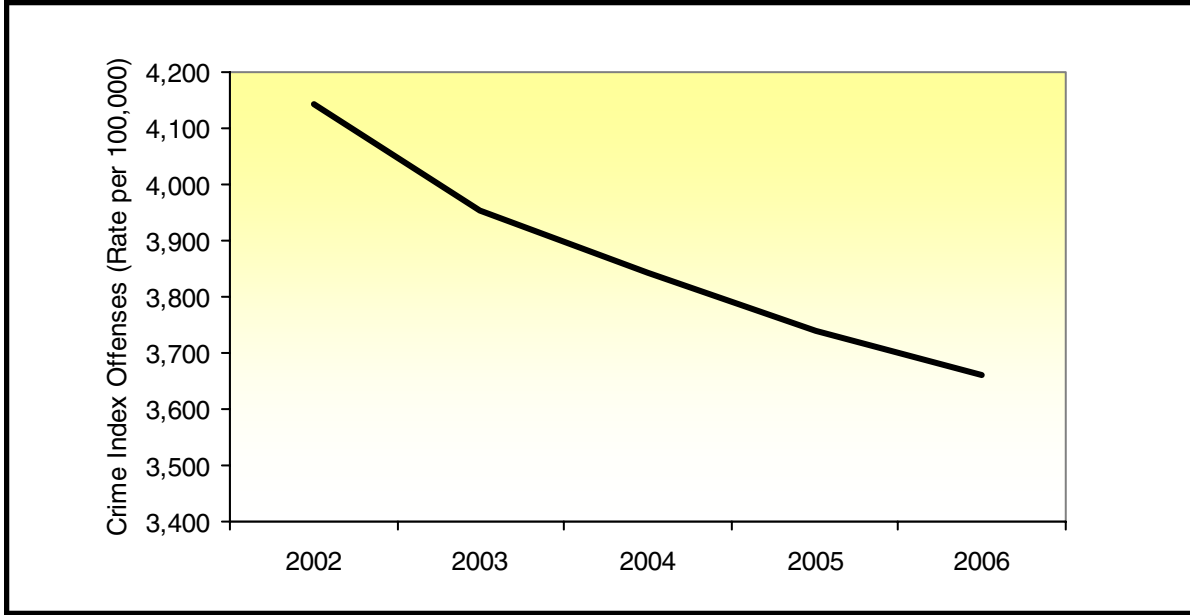
## DRUG CRIME ARREST COMPARISON 2006/2005

Year	Rate per 100,000	Total Drug Arrests	Cannabis Control Act	Controlled Substances Act	Hypodermic Syringes & Needles Act	Drug Paraphernalia Act
2006	880.4	112,368	51,653	44,676	647	15,392
2005	888.8	113,002	50,119	47,392	732	14,759
% Chg	-0.9%	-0.6%	3.1%	-5.7%	-11.6%	4.3%

## SUPPLEMENTAL DATA - TOTAL OFFENSES REPORTED 2006/2005

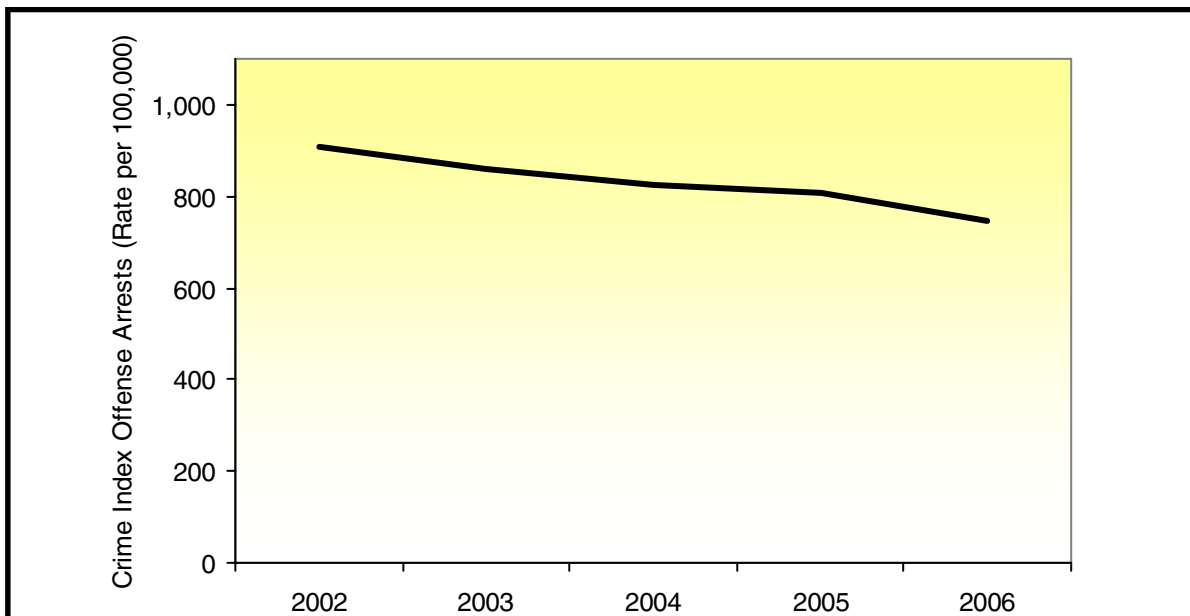
Year	Crimes Against School Personnel	Crimes Against Children	Domestic Crimes	Hate Crimes
2006	3,161	36,376	114,921	191
2005	3,242	39,410	115,411	229
% Chg	-2.5%	-7.7%	-0.4%	-16.6%

## CRIME INDEX OFFENSES

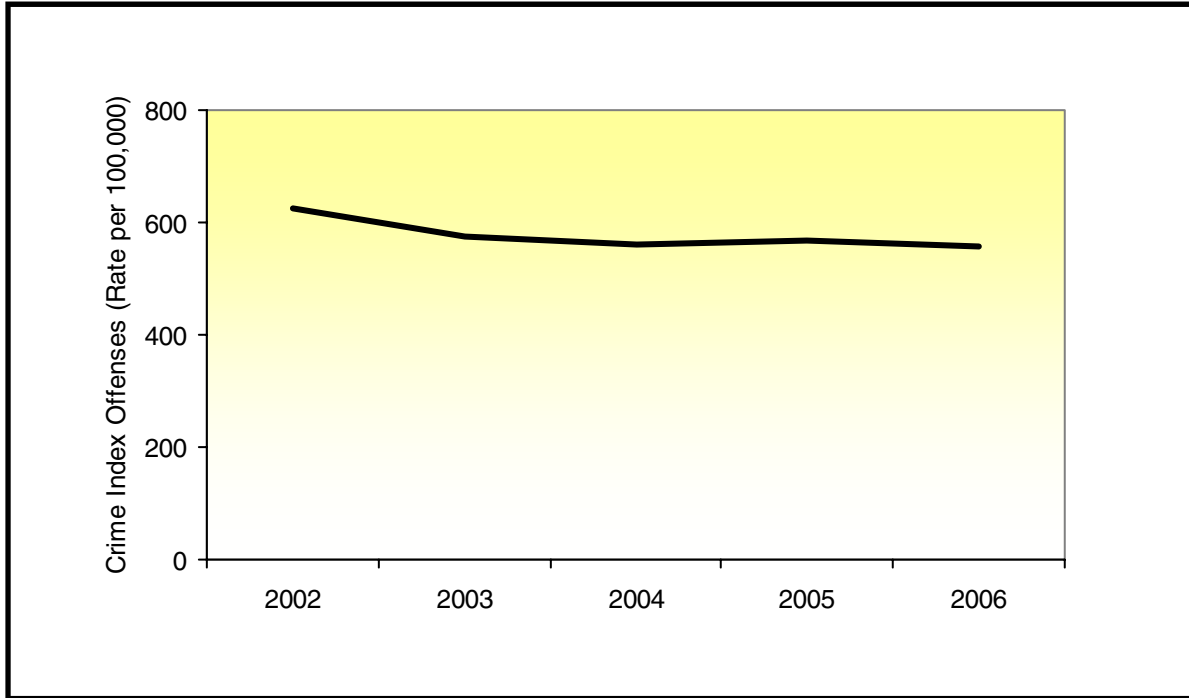


<b>Crime Index Offenses</b>	<b>2002</b>	<b>2003</b>	<b>2004</b>	<b>2005</b>	<b>2006</b>
Number of Offenses	519,192	497,822	486,469	475,497	467,372
Percent Change from Previous Year	-1.4%	-4.1%	-2.3%	-2.3%	-1.7%
Rate per 100,000 Inhabitants	4,144.1	3,955.2	3,844.5	3,740.1	3,661.8
Number of Arrests	114,015	108,124	104,607	102,905	95,351
Percent Change from Previous Year	-4.4%	-5.2%	-3.3%	-1.6%	-7.3%
Rate per 100,000 Inhabitants	910.0	859.1	826.7	809.4	747.1

## CRIME INDEX OFFENSE ARRESTS



# VIOLENT CRIME



**Definition:** The crime index offenses of murder, criminal sexual assault, robbery, and aggravated assault/battery (including attempted murder and ritual mutilation) comprise the general category of violent crime.

Violent Crime Index Offenses	2002	2003	2004	2005	2006
Number of Offenses	78,275	72,172	71,142	72,348	71,226
Percent Change from Previous Year	-3.5%	-7.8%	-1.4%	1.7%	-1.6%
Rate per 100,000 Inhabitants	624.8	573.4	562.2	569.1	558.1

## Summary

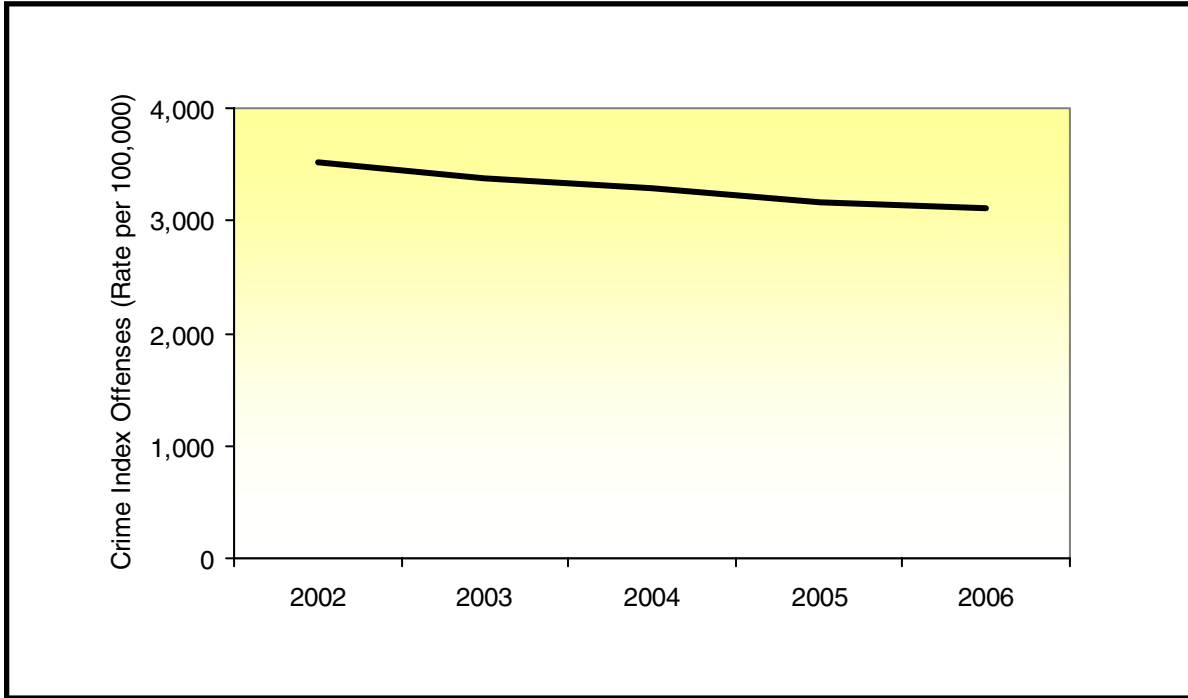
There were 71,226 violent crime offenses reported to the I-UCR Program this year, an average of 195 each day, or one every 7 minutes and 23 seconds. This is a 1.6 percent decrease from the 72,348 violent crime index offenses reported last year. The violent crime offense rate for 2006 is 558.1 per 100,000 inhabitants.

## Arrests

There were 25,593 arrests this year for violent crime offenses. This is a 4.8 percent decrease from the 26,870 arrests reported last year. The violent crime offense arrest rate for 2006 is 200.5 per 100,000 inhabitants.



# PROPERTY CRIME



**Definition:** The crime index offenses of burglary, theft (including burglary from a motor vehicle), motor vehicle theft, and arson comprise the general category of property crime.

Property Crime Offenses	2002	2003	2004	2005	2006
Number of Offenses	440,917	425,650	415,327	403,149	396,146
Percent Change from Previous Year	-1.0%	-3.5%	-2.4%	-2.9%	-1.7%
Rate per 100,000 Inhabitants	3,519.3	3,381.8	3,282.3	3,171.0	3,103.8

## Summary

There were 396,146 property crime offenses reported to the I-UCR Program this year, an average of 1,085 each day, or one every 1 minute and 20 seconds. This is a 1.7 percent decrease from the 403,149 crime index offenses reported last year. The property crime index offense rate for 2006 is 3,103.8 per 100,000 inhabitants.

## Arrests

There were 69,758 arrests this year for property crime offenses. This is a 8.3 percent decrease from the 76,035 arrests reported last year. The property crime index offense rate for 2006 is 546.5 per 100,000 inhabitants.

## CORE BASED STATISTICAL AREAS

The United States Office of Management and Budget developed new standards to define Core Based Statistical Areas (CBSAs) beginning in 2003. These standards replace and supersede the 1990 standards for defining Metropolitan Statistical Areas.

CBSAs are defined as a statistical geographic entity consisting of the county or counties associated with at least one core (urbanized area or urban cluster) of at least 10,000 population, plus adjacent counties having a high degree of social and economic integration with the core as measured through commuting ties with the counties containing the core. The new standards designate and define two categories of CBSAs: Metropolitan Statistical Areas and Micropolitan Statistical Areas. These are the terms used for the basic set of county-based areas as defined under this classification.

Metropolitan Statistical Areas have at least one urbanized area of 50,000 or more population, plus adjacent territory that has a high degree of social and economic integration with the core as measured by commuting ties. Micropolitan Statistical Areas—a new set of statistical areas—have at least one urban cluster of at least 10,000 but less than 50,000 population, plus adjacent territory that has a high degree of social and economic integration with the core as measured by commuting ties. If the specified criteria are met, a Metropolitan Statistical Area containing a single core with a population of 2.5 million or more may be subdivided to form smaller groupings of counties referred to as Metropolitan Divisions. Counties that do not fall within CBSAs represent Outside Core Based Statistical Areas.

There are 11 Metropolitan Statistical Areas that include 36 counties in Illinois. Inhabitants of the Metropolitan Statistical Areas account for 86.8 percent of the state’s population and 90.6 percent of the Illinois crime index offenses. There are 23 Micropolitan Statistical Areas that include 29 counties in Illinois. Inhabitants of the Micropolitan Statistical Areas account for 8.4 percent of the state’s population and 6.9 percent of the Illinois crime index offenses. There are 37 counties that comprise the Outside Core Based Statistical Areas in Illinois. Inhabitants of the Outside Core Based Statistical Areas account for 4.8 percent of the state’s population and 2.5 percent of the Illinois crime index offenses. In some cases the percentages may not sum to 100 due to rounding.

Six of Illinois’ Metropolitan and Micropolitan Statistical Areas are part of areas in Indiana, Iowa, Kentucky, Missouri, and Wisconsin. Areas outside of Illinois are not represented in the statistics presented here.

<b>CBSA Category</b>	<b>2006 Population</b>	<b>Total Crime Index Offenses*</b>	<b>Crime Rate per 100,000</b>	<b>Violent Crime Index Offenses*</b>	<b>Property Crime Index Offenses*</b>
Metropolitan Statistical Areas	11,076,094	423,438	3,823.0	65,052	358,386
Micropolitan Statistical Areas	1,070,883	32,341	3,020.0	4,033	28,308
Total Metro– and Micropolitan Statistical Areas	12,146,977	455,779	3,752.2	69,085	386,694
Outside Core Based Statistical Areas	616,394	11,555	1,874.6	2,138	9,417
Total Metro–, Micropolitan, and Outside Core Based Statistical Areas	12,763,371	467,334	3,661.5	71,223	396,111

\* Secretary of State totals are not reflected in the county totals but are reflected in the state total.

# SUPPLEMENTAL DATA

In April 1996, the I-UCR Program began collecting additional crime information. This data includes statistics pertaining to offenses mandated by state statutes and offenses concerning children. Due to limitations of agencies' reporting systems, all agencies are not included in the totals presented in the following tables. In some cases, the percentages may not sum to 100 due to rounding.

## DOMESTIC CRIMES

Reporting domestic violence is mandated by Chapter 20 of the Illinois Compiled Statutes, 2630/5.1. Domestic-related crimes are defined as crimes committed by family or household members, including spouses, former spouses, parents, children, stepchildren and other persons related by blood or marriage, persons who share or formerly shared a common dwelling, and persons who have or allegedly have a child in common. In the case of a high-risk adult with disabilities, family or household member includes any person who has the responsibility for that individual as a result of a family relationship, or who has assumed responsibility for all or a portion of the care voluntarily, by express or implied contract, or court order.

### Summary

There were 114,921 domestic violence offenses reported to the I-UCR Program this year, an average of 315 each day, or one every 4 minutes and 36 seconds. This is a 0.4 percent decrease from the 115,411 domestic violence offenses reported last year. The domestic violence offense rate is 900.4 per 100,000 inhabitants.

### DOMESTIC CRIMES BY RELATIONSHIP\*

Family Related			
Relationship Type	Group Percent	Relationship	Percent of Total
Marital	43.6%	Spouse	37.9%
		Ex-Spouse	4.8%
		Common-law Spouse	0.9%
Parental/Child	36.7%	Parent	15.3%
		Step-Parent	1.5%
		Grandparent	1.0%
		Child	14.6%
		Step-child	2.3%
		Grandchild	0.5%
		Child of Boyfriend/Girlfriend	1.5%
Other Family	19.7%	Sibling	11.4%
		Step-sibling	0.5%
		In-law	1.3%
		Other Family	6.6%

Other Domestic Related	
Relationship Type	Percent of Total
Boyfriend/Girlfriend	75.6%
Same Sex Relationship	1.3%
Child in Common with Offender	6.5%
Friend**	2.7%
Otherwise Known**	13.8%

\*\*Includes roommates/personal care attendants, etc.

\*Due to software issues, the 'Relationship Type' is unavailable from Chicago Police Department data and is not represented in the 'Domestic Crimes by Relationship' tables.

# SUPPLEMENTAL DATA

## CRIMES AGAINST CHILDREN

Although reporting in this category is not mandated by state statutes, information is collected to research and evaluate the problems of offenses against children. Contributing agencies are not required to report this data to the I-UCR Program. All crimes reported by participating agencies that involve victims aged 16 years and younger are included in this category.

### Summary

There were 36,376 crimes against children reported to the I-UCR Program this year, an average of 100 each day, or one every 14 minutes and 26 seconds. This is a 7.7 percent decrease from the 39,410 crimes reported last year. The crimes against children offense rate is 285.0 per 100,000 inhabitants.

### OFFENSE TYPE BY VICTIM AGE GROUP

Crime by Category	Ages Under 1 to 5 Years	Percent of Category Total	Ages 6 to 12 Years	Percent of Category Total	Ages 13 to 16 Years	Percent of Category Total	Total Under 1 to 16 Years	Percent of Total (36,376)
Murder*	8	17.8%	4	8.9%	33	73.3%	45	0.1%
Criminal Sexual Assault*	261	21.3%	343	28.0%	623	50.8%	1,227	3.4%
Robbery*	18	0.9%	320	16.6%	1,585	82.4%	1,923	5.3%
Aggravated Assault/Battery*	187	4.9%	834	21.8%	2,796	73.3%	3,817	10.5%
Simple Assault/Battery	733	3.8%	5,215	27.0%	13,383	69.2%	19,331	53.1%
Burglary*	17	11.1%	36	23.5%	100	65.4%	153	0.4%
Theft*	62	2.8%	568	25.6%	1,589	71.6%	2,219	6.1%
Theft/Burglary From a Motor Vehicle*	0	0.0%	1	2.5%	39	97.5%	40	0.1%
Motor Vehicle Theft*	4	21.1%	1	5.3%	14	73.7%	19	0.1%
Arson*	19	43.2%	16	36.4%	9	20.5%	44	0.1%
Sex Offenses	285	16.4%	595	34.2%	862	49.5%	1,742	4.8%
Offenses Involving Children	1,482	47.6%	1,112	35.7%	520	16.7%	3,114	8.6%
Disorderly Conduct	44	4.9%	157	17.5%	697	77.6%	898	2.5%
Intimidation	1	1.5%	12	17.9%	54	80.6%	67	0.2%
Kidnapping	184	30.2%	237	38.9%	188	30.9%	609	1.7%
Deadly Weapon	5	20.0%	3	12.0%	17	68.0%	25	0.1%
Violation of Orders of Protection	61	26.2%	82	35.2%	90	38.6%	233	0.6%
All Other Offenses	120	13.8%	174	20.0%	576	66.2%	870	2.4%
<b>TOTAL</b>	<b>3,491</b>	<b>9.6%</b>	<b>9,710</b>	<b>26.7%</b>	<b>23,175</b>	<b>63.7%</b>	<b>36,376</b>	<b>100.0%</b>

\* Indicates Crime Index Offenses.

# SUPPLEMENTAL DATA

## CRIMES AGAINST SCHOOL PERSONNEL

The reporting of attacks on school personnel is mandated by Chapter 105 of the Illinois Compiled Statutes, 5/10-21.7. The I-UCR Program collects information relating to all crimes committed against teachers, administrative personnel, or educational support personnel. This includes teacher’s aides, bus drivers, or janitors, etc., who are employed by the school.

### Summary

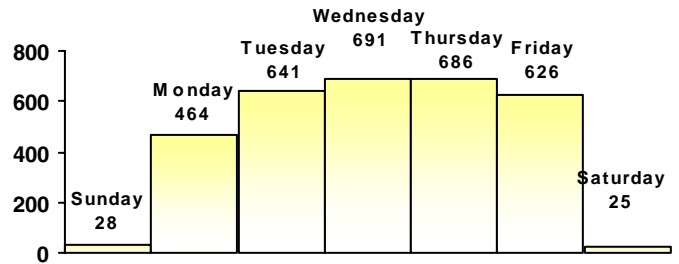
There were 3,161 crimes against school personnel reported to the I-UCR Program this year, an average of eight each day, or one every 2 hours and 46 minutes. This is a 2.5 percent decrease from the 3,242 crimes reported last year. The crimes against school personnel offense rate is 24.8 per 100,000 inhabitants.

### OFFENSE TYPE BY CRIME CATEGORY

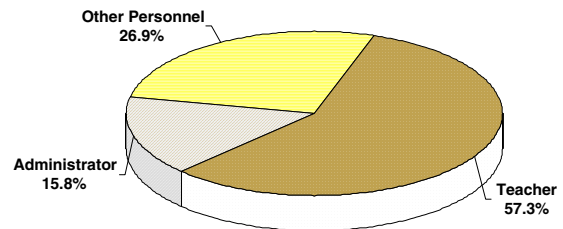
Crime by Category	Number of Offenses	Percent of Total
Murder*	0	0.0%
Criminal Sexual Assault*	1	0.0%
Robbery*	1	0.0%
Aggravated Assault/Battery*	2,523	79.8%
Simple Assault/Battery	465	14.7%
Burglary*	4	0.1%
Theft*	69	2.2%
Theft/Burglary From a Motor Vehicle*	0	0.0%
Motor Vehicle Theft*	0	0.0%
Arson*	0	0.0%
Sex Offenses	3	0.1%
Disorderly Conduct	48	1.5%
Intimidation	0	0.0%
Kidnapping	0	0.0%
Deadly Weapon	5	0.2%
All Other Offenses	42	1.3%
<b>TOTAL</b>	<b>3,161</b>	<b>100.0%</b>

\* Indicates Crime Index Offenses.

### OFFENSES BY DAY OF OCCURRENCE



### OFFENSES BY VICTIM TYPE\*\*



\*\*Due to software issues, the 'Victim Type' is unavailable from Chicago Police Department data and is not represented in the 'Offenses by Victim Type' chart.

# SUPPLEMENTAL DATA

## HATE CRIME

The reporting of hate crime information is mandated by Chapter 20 of the Illinois Compiled Statutes, 2605/390(a). A hate crime is committed when, by reason of the actual or perceived race, color, creed, religion, ancestry, gender, sexual orientation, physical or mental stability, or national origin of another individual or group of individuals, a person commits assault, battery, aggravated assault, misdemeanor theft, criminal trespass to residence, misdemeanor criminal damage to property, criminal trespass to vehicle, criminal trespass to real property, mob action, or disorderly conduct.

### Summary

This year, 191 incidents of hate crime were reported through the I-UCR Program. These incidents were committed by 324 offenders. This is a 16.6 percent decrease from the 229 incidents reported last year. Multiple victims and/or offenses may be reported within a single incident. The following table depicts hate crime data by victim, offender race, and bias motivation.

### OFFENSE TYPE BY CATEGORY

<b>Hate Crime Incidents by Type of Victim</b>		
Type of Victim	Number of Incidents	Percent of Total
Business	2	1.0%
Government	2	1.0%
Individual	164	85.9%
Other	16	8.4%
Religious Organization	4	2.1%
Society/Public	1	0.5%
Unknown	2	1.0%
<b>TOTAL</b>	<b>191</b>	<b>100.0%</b>

<b>Hate Crime Offenses by Offender Race</b>		
Offender's Race	Number of Offenders	Percent of Total
Asian/Pacific Islander	0	0.0%
Black	116	35.8%
Multi-Racial Group	45	13.9%
Unknown	3	0.9%
White	160	49.4%
<b>TOTAL</b>	<b>324</b>	<b>100.0%</b>

<b>Bias Motivation Totals</b>		
Bias Motivation	Number of Incidents	Percent of Total
Anti-Arab	6	3.1%
Anti-Asian/Pacific Islander	5	2.6%
Anti-Black	80	41.9%
Anti-Catholic	0	0.0%
Anti-Elderly	5	2.6%
Anti-Female Homosexual (Lesbian)	11	5.8%
Anti-Hispanic	6	3.1%
Anti-Homosexual (Gay & Lesbian)	5	2.6%
Anti-Islamic (Muslim)	4	2.1%
Anti-Jewish	20	10.5%
Anti-Male Homosexual (Gay)	24	12.6%
Anti-Multi-Racial Group	7	3.7%
Anti-Other Ethnicity/Nat'l Origin	3	1.6%
Anti-Other Religion	1	0.5%
Anti-Protestant	0	0.0%
Anti-White	14	7.3%
<b>TOTAL</b>	<b>191</b>	<b>100.0%</b>

# LAW ENFORCEMENT EMPLOYEE INFORMATION

<b>Sworn &amp; Civilian Full-Time Law Enforcement Employees by Agency Type</b>					
<b>Sworn &amp; Civilian Full-Time Employees</b>	<b>Police Departments</b>	<b>Sheriff's Offices</b>	<b>Miscellaneous Agencies</b>	<b>Total</b>	<b>Percent of Total</b>
0 - 10	484	13	44	541	52.2%
11- 50	234	55	44	333	32.1%
51- 200	106	27	10	143	13.8%
201 +	10	7	3	20	1.9%
<b>TOTAL</b>	<b>834</b>	<b>102</b>	<b>101</b>	<b>1,037</b>	<b>100.0%</b>

## Statewide

The statewide total number of law enforcement personnel in Illinois for 2006 is 59,584. The 42,210 part- and full-time sworn officers in 2006 account for 70.8 percent of the entire state of Illinois' law enforcement work force. The 2006 rate of sworn employees to population for Illinois is 3.3 per 1,000 inhabitants. The 14,985 civilian employees comprise 25.1 percent of the entire state of Illinois law enforcement community's work force, with an employment rate of 1.2 per 1,000 inhabitants. The 2,389 auxiliary officers (officers not on active duty but subject to call in an emergency situation) in 2006 account for 4.0 percent of the entire state of Illinois law enforcement community's work force, with an employment rate of 0.2 per 1,000 inhabitants.

## Police Departments

Police departments employed 37,971 law enforcement employees statewide in 2006 accounting for 63.7 percent of the state law enforcement employee total. Part- and full-time sworn officers account for 82.7 percent (31,391) of the police department work force. The 2006 employment rate for sworn employees of police departments is 2.9 per 1,000 inhabitants. The 5,045 civilian employees comprise 13.3 percent of the police department work force, with an employment rate of 0.5 per 1,000 inhabitants. The 1,535 auxiliary officers in 2006 comprise 4.0 percent of the police department work force, with an employment rate of 0.1 per 1,000 inhabitants.

## Sheriffs' Offices

Sheriffs' offices employed 14,783 law enforcement employees statewide in 2006 accounting for 24.8 percent of the state law enforcement employee total. The 6,255 part- and full-time sworn officers in 2006 account for 42.3 percent of the sheriffs' offices work force. The 2006 employment rate for sworn employees of sheriffs' offices is 3.0 per 1,000 inhabitants. The 7,749 civilian employees comprise 52.4 percent of the sheriffs' offices work force, with an employment rate of 3.7 per 1,000 inhabitants. The 779 auxiliary officers in 2006 comprise 5.3 percent of the sheriffs' offices work force, with an employment rate of 0.4 per 1,000 inhabitants.

## Miscellaneous Agencies

Miscellaneous agencies employed 6,830 law enforcement employees statewide in 2006 accounting for 11.5 percent of the state law enforcement employee total. Miscellaneous agencies reported 4,564 part- and full-time sworn officers in 2006 accounting for 66.8 percent of the miscellaneous agencies work force. These agencies include airports, colleges and universities, fire departments/arson investigations, forest preserves, hospitals, other agencies, park districts, and railroads. Since miscellaneous agencies do not have a population, employment rates cannot be calculated. The 2,191 civilian employees comprise 32.1 percent of the miscellaneous agencies work force. The 75 auxiliary officers in 2006 comprise 1.1 percent of the miscellaneous agencies work force.

Inquiries on the data presented in this  
publication may be directed to:

Illinois State Police  
Illinois Uniform Crime Reporting Program  
500 Iles Park Place, Suite 200  
Springfield, Illinois 62703-2982  
217/782-5794

Internet Address:  
<http://www.isp.state.il.us>  
<http://www.illinois.gov>