

SECTION I - CRIME TRENDS

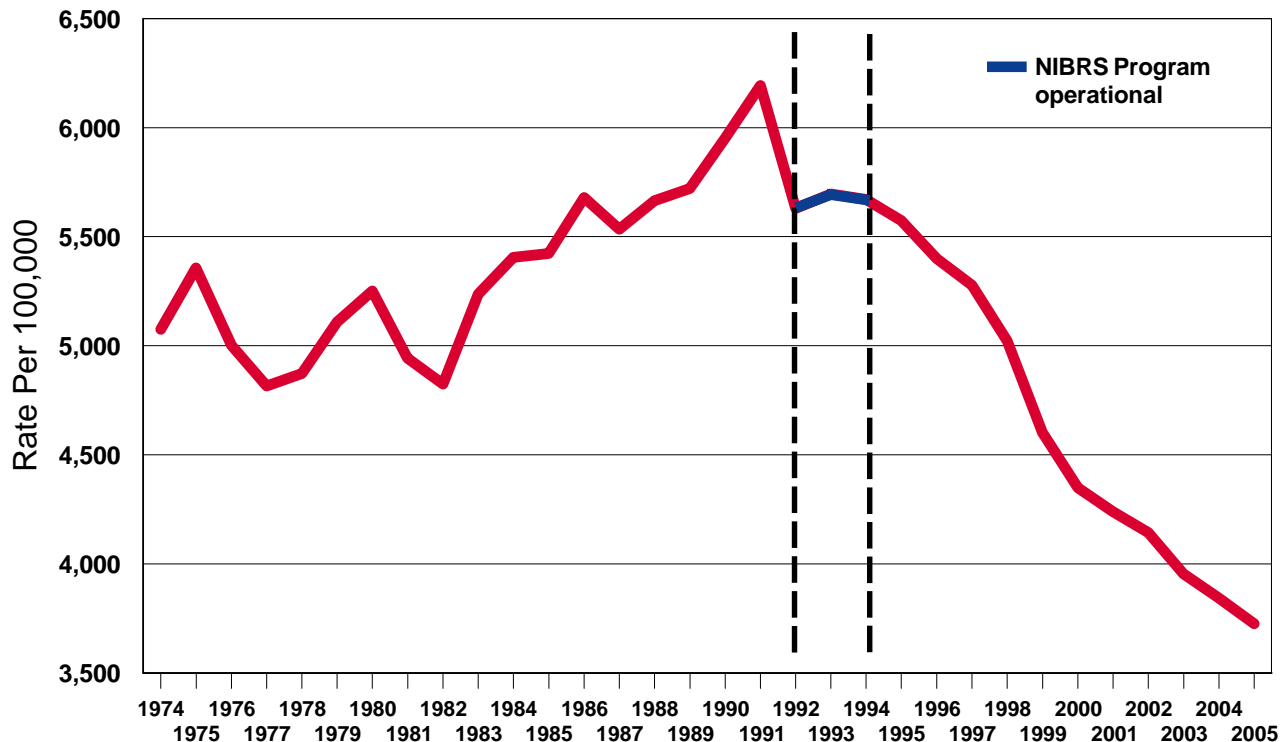
Crime Trends - A Historical Perspective

This historical information is intended to provide a comprehensive perspective in crime trends. The graph below illustrates the general trend in crimes reported in Illinois from 1974 to 2005. The Crime Index is composed of selected offenses used to gauge fluctuations in the overall volume and rate of crime reported to law enforcement. The offenses included are the violent crimes of murder, criminal sexual assault, robbery, and aggravated assault/battery (including attempted murder and ritual mutilation); and the property crimes of burglary, theft (including burglary from a motor vehicle), motor vehicle theft, and arson.

Crime trends may be analyzed using two separate methods: crime volume and crime rates. Crime volume is merely the aggregate total of the Crime Index. By comparing the crime volume from year to year, trends in the number of crimes reported to police can be studied. Crime rates are compiled to compensate for the changes in the size of population. Crime rates are generally expressed as the total number of index crimes per 100,000 inhabitants.

For ease of interpretation, the crime rate is shown for each year from 1974 through 2005. The term "Rate" refers to the number of crimes per 100,000 inhabitants. The crime rate is calculated by dividing the number of crimes reported to police by the jurisdictional population, and multiplying that number by 100,000.

Illinois Crime Index Offense Rate 1974-2005



Considerations for interpretation:

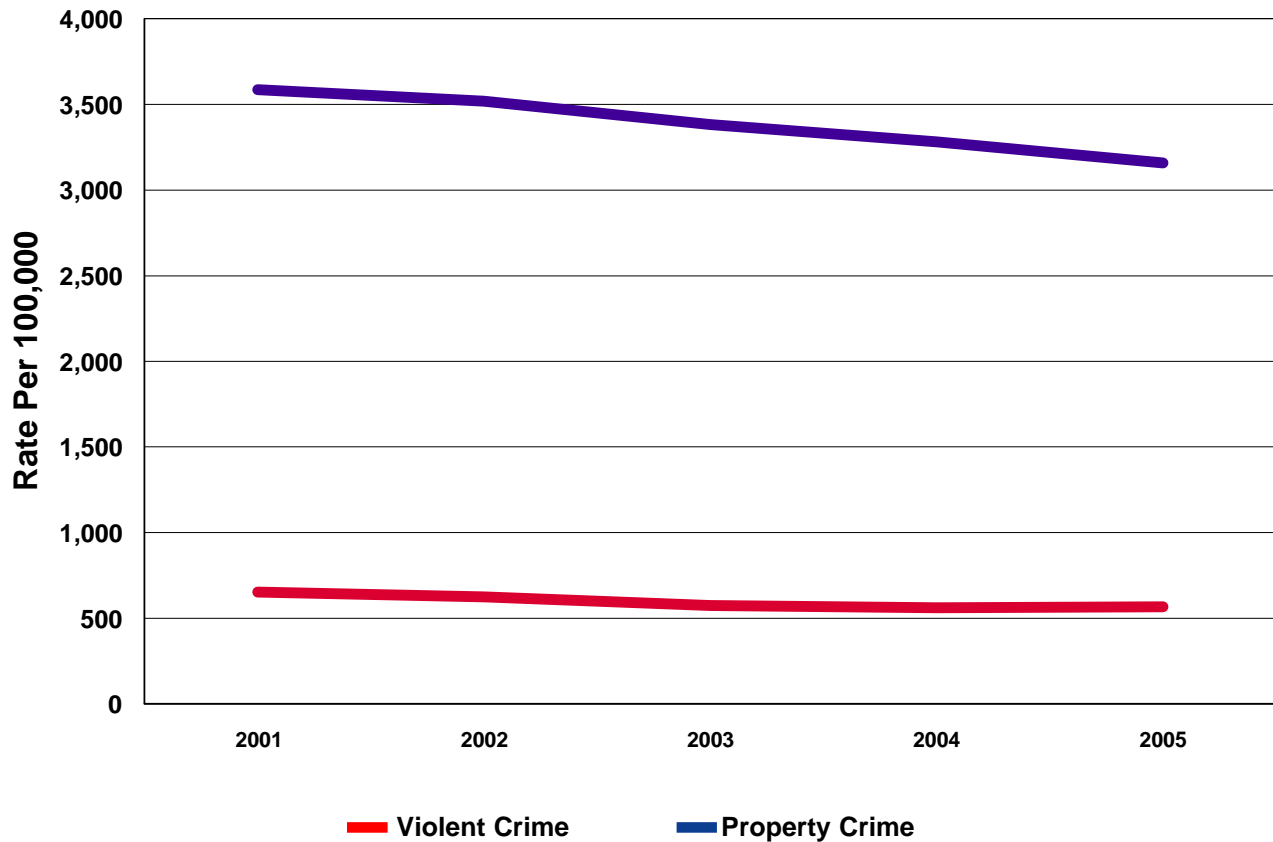
On January 1, 1992, the Revised Illinois Uniform Crime Reporting Program, operating under the Federal Bureau of Investigation's National Incident Based Reporting System (NIBRS) criteria, became operational. This new system was used to collect data from 1992 through 1993. In 1994 the Illinois State Police implemented a new reporting procedure. Data was captured and provided to the Illinois State Police on a Monthly Crime Index Form ISP 2-423 (1/02) (see Appendix). Crime index offenses, crime index offense arrests, and drug crime arrests were required to be reported by the local law enforcement agency. This same procedure is still in use to date. However, the change in reporting may have contributed to the decrease in Index offense rates from 1991-1993.

Effective July 1, 1984, sex crimes committed in Illinois were governed by a new statute entitled "Illinois Criminal Sexual Assault Act" (Chapter 720 ILCS 5/12-13,14). This statute repealed eight existing laws in Illinois including rape. On July 1, 1984, law enforcement agencies began reporting the new sex offenses to the I-UCR Program. The criminal sexual assault category reflects offenses reported as rape from 1972 through June 30, 1984. Effective July 1, 1984, offenses were reported as aggravated criminal sexual assault and criminal sexual assault.

Crime Trends - A Historical Perspective

Violent crime offenses consist of murder, criminal sexual assault, robbery, and aggravated assault/battery (including attempted murder and ritual mutilation). Violent crimes accounted for 15.2 percent of the crime index total in 2005. Property crime offenses consist of burglary, theft (including burglary from a motor vehicle), motor vehicle theft, and arson. Property crimes accounted for 84.8 percent of the crime index total in 2005.

Illinois Violent & Property Crime Index Offense Rate 2001-2005

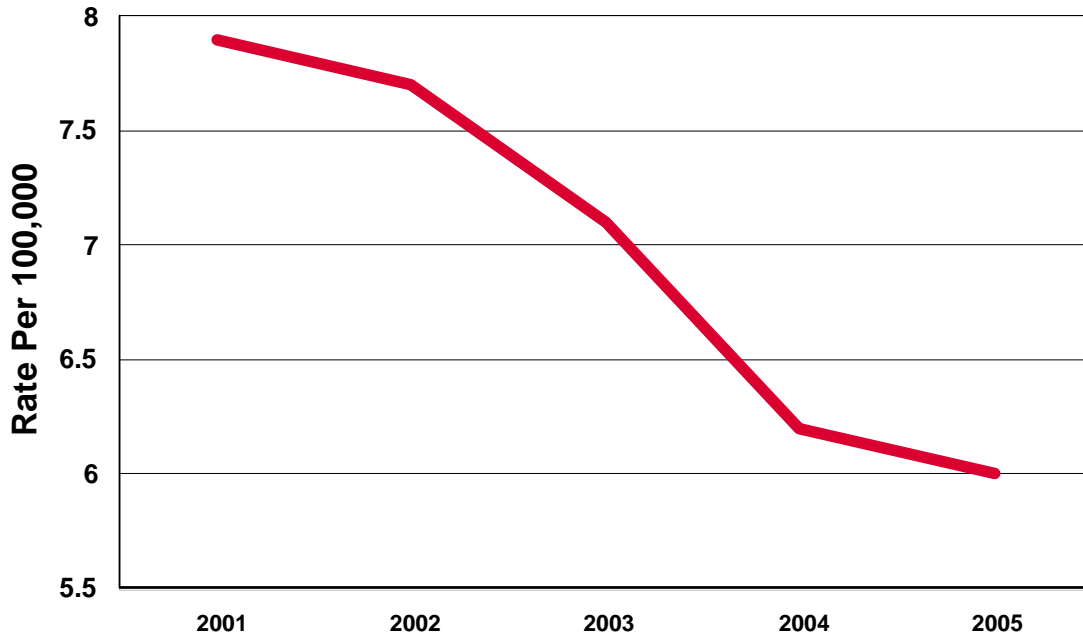


Note: See page 18 for the actual crime index offense rates and total number of offenses reported in each category for 2001-2005.

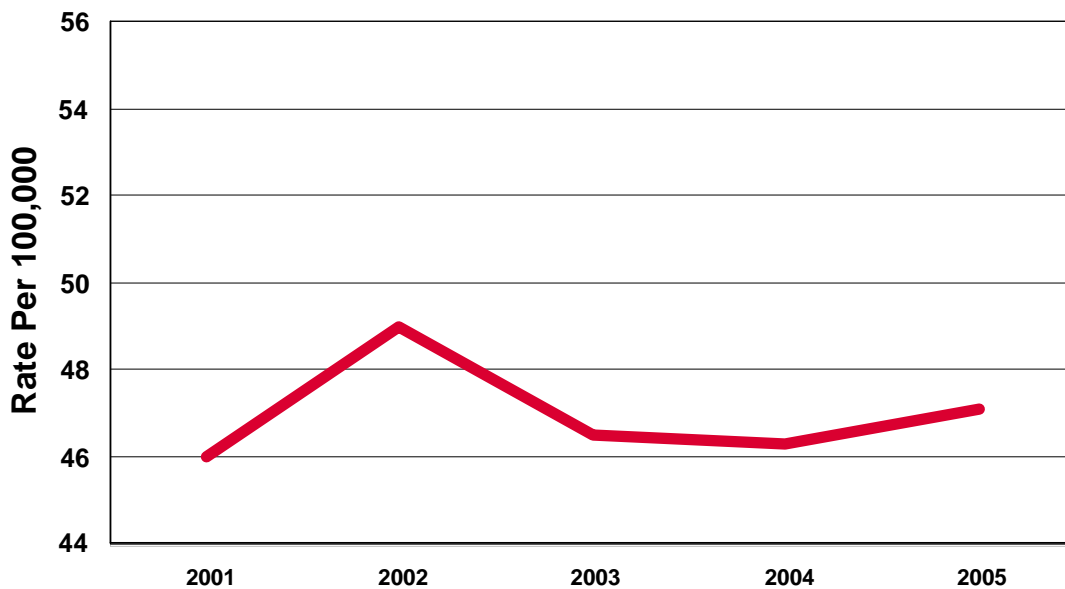
Crime Trends - A Historical Perspective

With the exception of murder, violent crime index offense rates increased in each category. Murder and criminal sexual assault remain the smallest contributors to the overall violent crime index offense total.

Illinois Crime Index Offense Rate 2001-2005



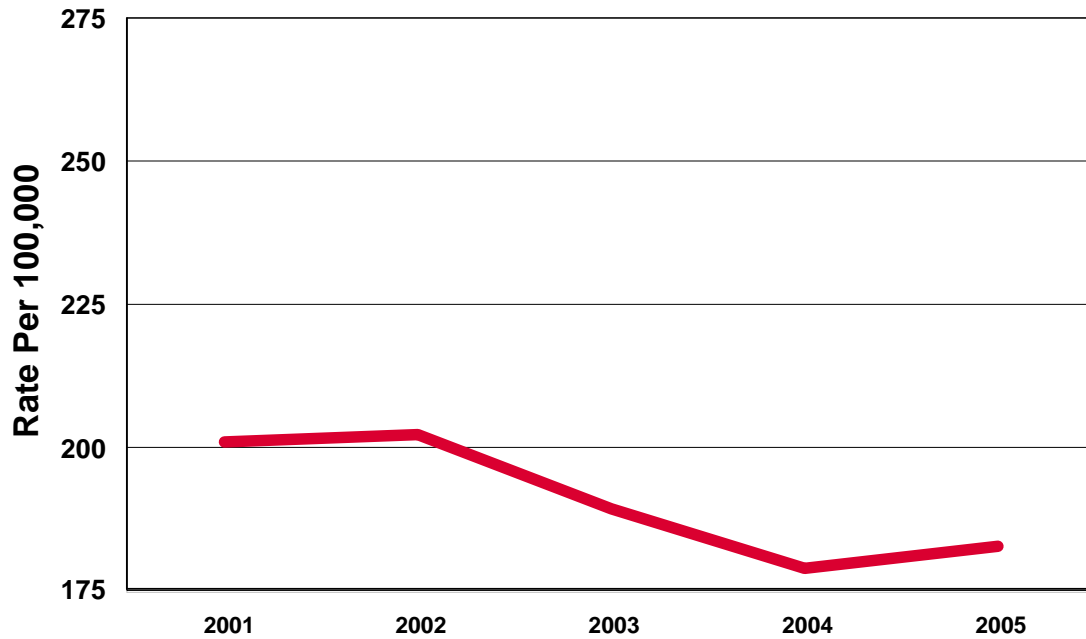
Illinois Criminal Sexual Assault Crime Index Offense Rate 2001-2005



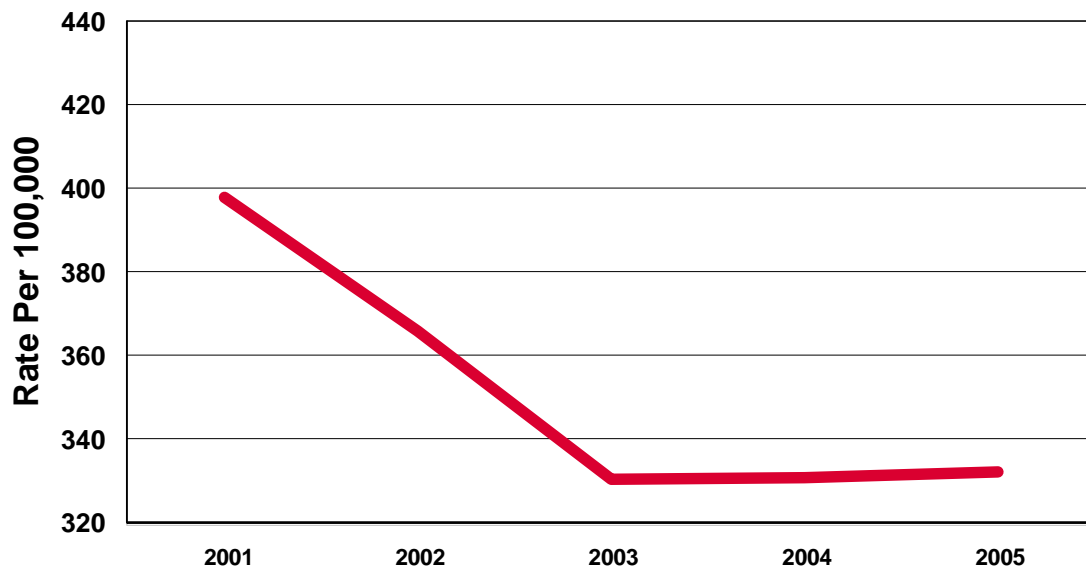
Note: See page 18 for the actual crime index offense rates and total number of offenses reported in each category for 2001-2005.

Crime Trends - A Historical Perspective

Illinois Robbery Crime Index Offense Rate 2001-2005



Illinois Aggravated Assault/Battery Crime Index Offense Rate 2001-2005 (Including Attempted Murder & Ritual Mutilation)

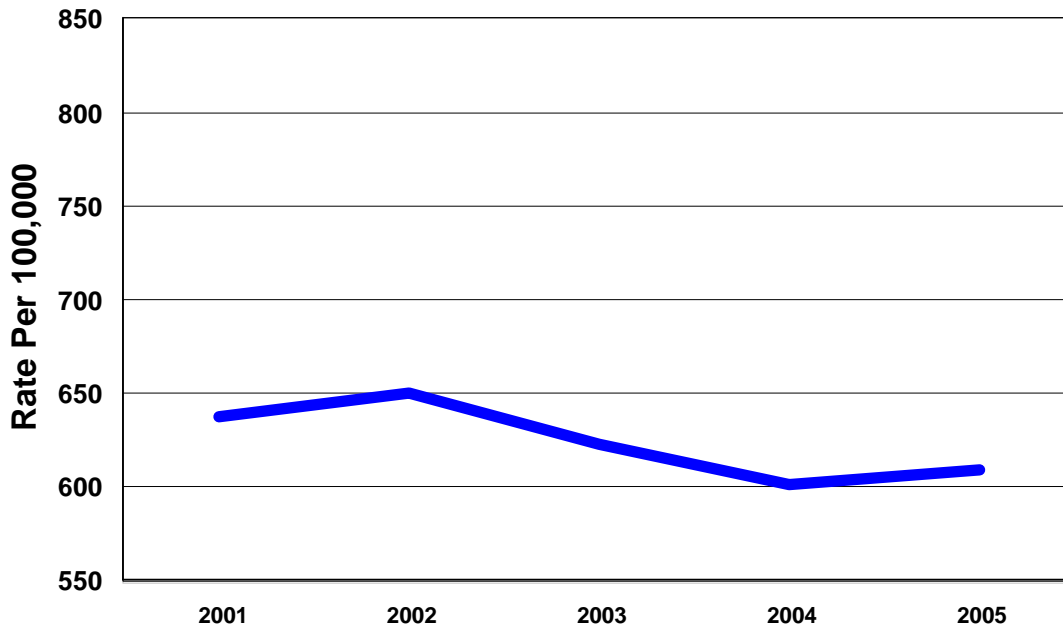


Note: See page 18 for the actual crime index offense rates and total number of offenses reported in each category for 2001-2005.

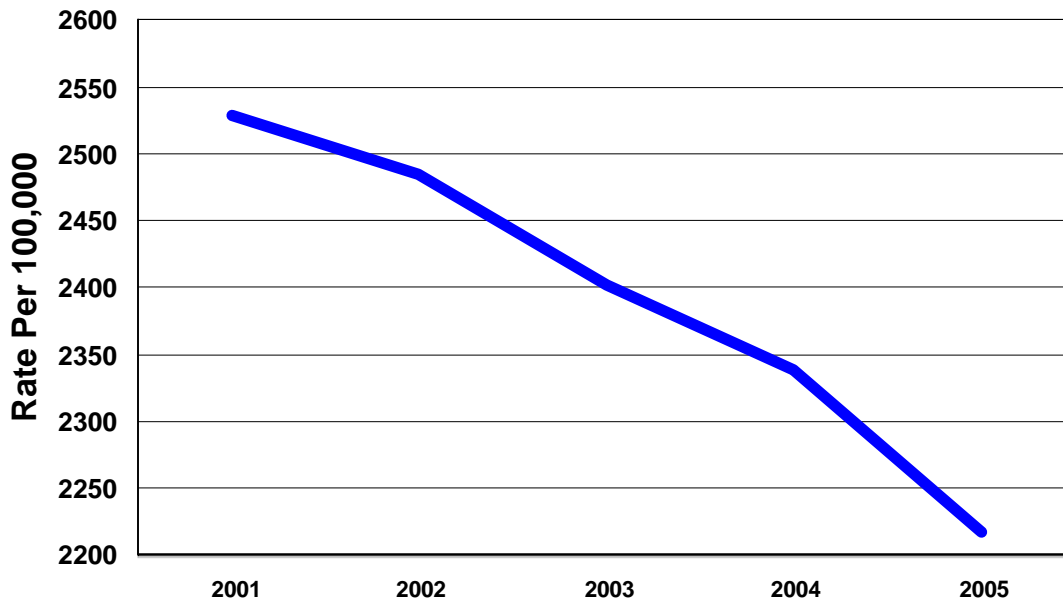
Crime Trends - A Historical Perspective

With the exception of burglary and arson, property crime index offense rates declined in each category. Arson and motor vehicle theft remain the smallest contributors to the overall property crime index offense total.

Illinois Burglary Crime Index Offense Rate 2001-2005



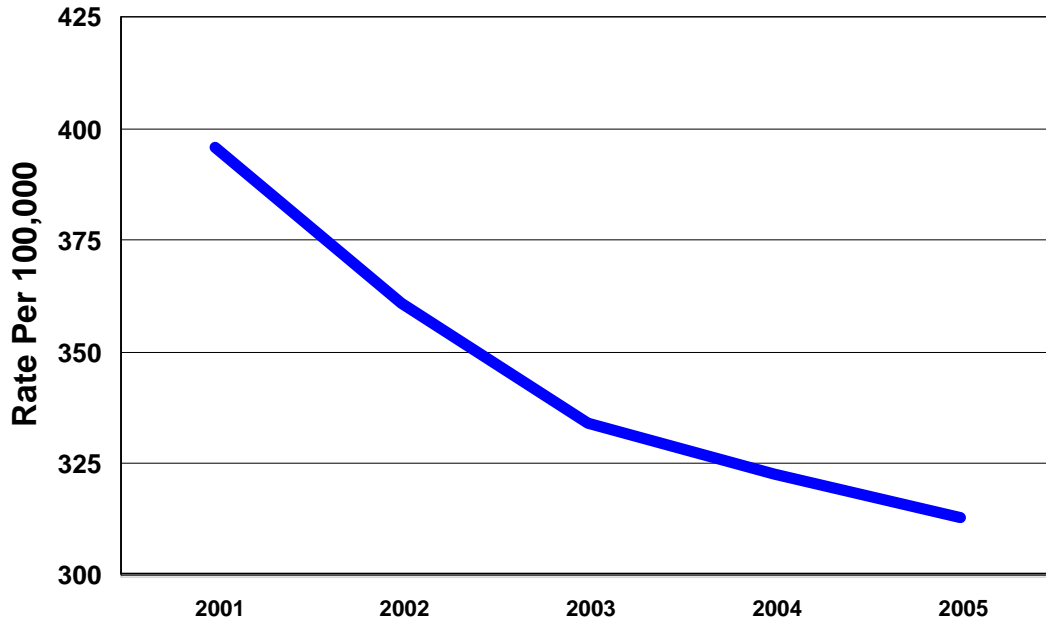
Illinois Theft Crime Index Offense Rate 2001-2005 (Including Burglary from Motor Vehicle)



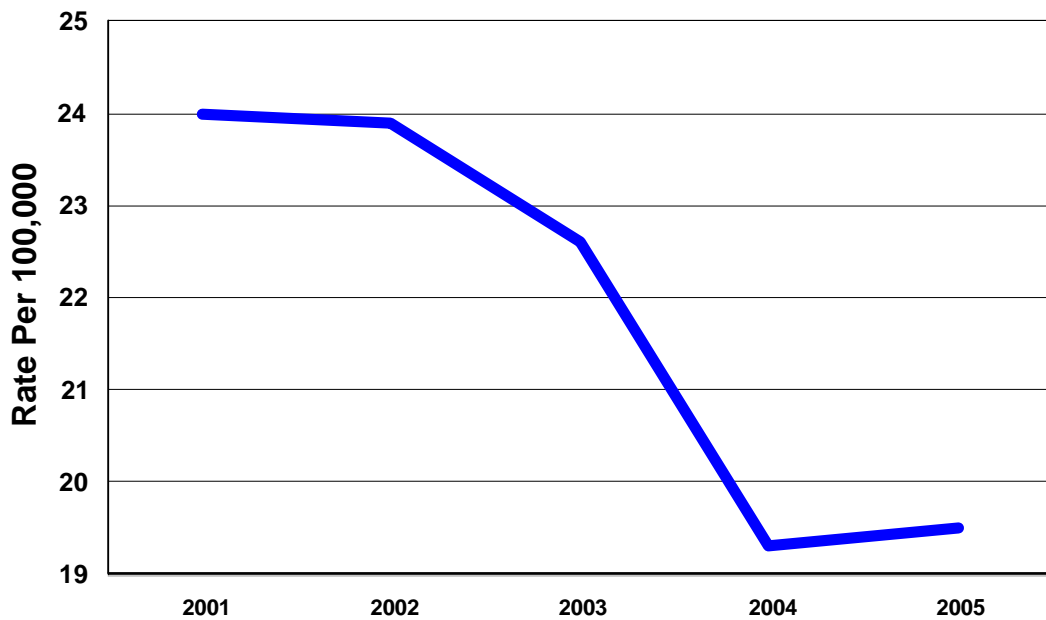
Note: See page 18 for the actual crime index offense rates and total number of offenses reported in each category for 2001-2005.

Crime Trends - A Historical Perspective

Illinois Motor Vehicle Theft Crime Index Offense Rate 2001-2005



Illinois Arson Crime Index Offense Rate 2001-2005



Note: See page 18 for the actual crime index offense rates and total number of offenses reported in each category for 2001-2005.

Crime Trends - Violent Crimes/Property Crimes

Regional tables provide useful comparisons of offense totals and rates among different types of jurisdictions in Illinois. These include the following:

Downstate Total - The downstate total consists of the state total (including Cook County) minus Chicago Police Department data.

Chicago Police Department Total - This total consists of the Chicago Police Department data.

Cook County Total - This total consists of Cook County data (including Chicago Police Department).

Suburban Cook County Total - This total consists of all Cook County data minus Chicago Police Department data.

Collar Counties Total - This total consists of data reported by sheriffs' offices, police departments, colleges, and universities in DuPage, Kane, Lake, McHenry, and Will Counties.

Urban Counties Total - This total consists of data reported by sheriffs' offices, police departments, colleges, and universities in the following counties:

Bond	DeKalb	Kankakee	Marshall	Ogle	St. Clair	Woodford
Boone	Ford	Kendall	McLean	Peoria	Stark	
Calhoun	Grundy	Macon	Menard	Piatt	Tazewell	
Champaign	Henry	Macoupin	Mercer	Rock Island	Vermilion	
Clinton	Jersey	Madison	Monroe	Sangamon	Winnebago	

Rural Counties Total - This total consists of data reported by sheriffs' offices, police departments, colleges, and universities in the following counties:

Adams	Crawford	Gallatin	JoDaviess	Massac	Randolph	Washington
Alexander	Cumberland	Greene	Johnson	McDonough	Richland	Wayne
Brown	DeWitt	Hamilton	Knox	Montgomery	Saline	White
Bureau	Douglas	Hancock	LaSalle	Morgan	Schuyler	Whiteside
Carroll	Edgar	Hardin	Lawrence	Moultrie	Scott	Williamson
Cass	Edwards	Henderson	Lee	Perry	Shelby	
Christian	Effingham	Iroquois	Livingston	Pike	Stephenson	
Clark	Fayette	Jackson	Logan	Pope	Union	
Clay	Franklin	Jasper	Marion	Pulaski	Wabash	
Coles	Fulton	Jefferson	Mason	Putnam	Warren	

Counties are considered urban if their population consists of at least 50,000 residents or if they contribute at least 50,000 residents to a total Metropolitan Statistical Area (MSA) of 100,000. An area qualifies for recognition as an MSA in one of two ways: (1) if it includes a city of at least 50,000 population, or (2) if it includes an urbanized area of at least 50,000 population with a total metropolitan population of 100,000. The MSA comprises the central county or counties containing the core, plus adjacent outlying counties having a high degree of social and economical integration with the central county as measured through commuting ties. Those that are not part of an MSA are classified as rural counties.

State Total Crime Index Offenses 2001-2005

INDEX OFFENSE	YEAR	% OF TOTAL	NUMBER OF OFFENSES	% VOLUME CHANGE	CRIME RATE PER 100,000	% RATE CHANGE
Murder	2001	0.19	982	+9.4	7.9	+9.7
	2002	0.19	961	-2.1	7.7	-2.5
	2003	0.18	895	-6.9	7.1	-7.8
	2004	0.16	780	-12.8	6.2	-12.7
	2005	0.16	766	-1.8	6.0	-3.2
Criminal Sexual Assault	2001	1.08	5,708	+0.4	46.0	+0.4
	2002	1.18	6,138	+7.5	49.0	+6.5
	2003	1.18	5,852	-4.7	46.5	-5.1
	2004	1.21	5,862	+0.2	46.3	-0.4
	2005	1.26	5,982	+2.0	47.1	+1.7
Robbery	2001	4.74	24,965	-2.8	201.0	-2.8
	2002	4.88	25,348	+1.5	202.3	+0.6
	2003	4.78	23,813	-6.1	189.2	-6.5
	2004	4.65	22,611	-5.0	178.7	-5.5
	2005	4.90	23,215	+2.7	182.6	+2.2
Aggravated Assault, Aggravated Battery, Attempted Murder & Ritual Mutilation	2001	9.39	49,455	-2.7	398.2	-2.7
	2002	8.83	45,828	-7.3	365.8	-8.1
	2003	8.36	41,612	-9.2	330.6	-9.6
	2004	8.61	41,889	+0.7	331.0	+0.1
	2005	8.92	42,264	+0.9	332.4	+0.4
Violent Crimes Subtotal	2001	15.41	81,110	-2.4	653.1	-2.4
	2002	15.08	78,275	-3.5	624.8	-4.3
	2003	14.50	72,172	-7.8	573.4	-8.2
	2004	14.62	71,142	-1.4	562.2	-2.0
	2005	15.24	72,227	+1.5	568.1	+1.0
Burglary	2001	15.04	79,157	-3.3	637.4	-3.3
	2002	15.69	81,440	+2.9	650.0	+2.0
	2003	15.74	78,345	-3.8	622.5	-4.2
	2004	15.64	76,088	-2.9	601.3	-3.4
	2005	16.35	77,462	+1.8	609.3	+1.3
Theft	2001	59.66	314,080	-2.3	2,529.0	-2.3
	2002	59.95	311,272	-0.9	2,484.5	-1.8
	2003	60.74	302,387	-2.9	2,402.5	-3.3
	2004	60.85	295,996	-2.1	2,339.2	-2.6
	2005	59.50	281,913	-4.8	2,217.4	-5.2
Motor Vehicle Theft	2001	9.34	49,160	-3.0	395.8	-3.0
	2002	8.71	45,216	-8.0	360.9	-8.8
	2003	8.45	42,069	-7.0	334.2	-7.4
	2004	8.39	40,796	-3.0	322.4	-3.5
	2005	8.39	39,750	-2.6	312.7	-3.0
Arson	2001	0.57	2,976	+0.9	24.0	+1.3
	2002	0.58	2,989	+0.4	23.9	-0.4
	2003	0.57	2,849	-4.7	22.6	-5.4
	2004	0.50	2,447	-14.1	19.3	-14.6
	2005	0.52	2,482	+1.4	19.5	+1.0
Property Crimes Subtotal	2001	84.59	445,373	-2.6	3,586.1	-2.6
	2002	84.92	440,917	-1.0	3,519.3	-1.9
	2003	85.50	425,650	-3.5	3,381.8	-3.9
	2004	85.38	415,327	-2.4	3,282.3	-2.9
	2005	84.76	401,607	-3.3	3,158.9	-3.8
Crime Index Total	2001	100.00	526,483	-2.5	4,239.2	-2.5
	2002	100.00	519,192	-1.4	4,144.1	-2.2
	2003	100.00	497,822	-4.1	3,955.2	-4.6
	2004	100.00	486,469	-2.3	3,844.5	-2.8
	2005	100.00	473,834	-2.6	3,727.0	-3.1

Downstate Illinois Crime Index Offenses 2001-2005

INDEX OFFENSE	YEAR	% OF TOTAL	NUMBER OF OFFENSES	% VOLUME CHANGE	CRIME RATE PER 100,000	% RATE CHANGE
Murder	2001	0.10	317	+18.7	3.3	+17.9
	2002	0.10	310	-2.2	3.2	-3.0
	2003	0.09	297	-4.2	3.1	-3.1
	2004	0.11	332	+11.8	3.4	+9.7
	2005	0.10	320	-3.6	3.2	-5.9
Criminal Sexual Assault	2001	1.14	3,732	+1.2	39.2	+1.3
	2002	1.26	4,115	+10.3	42.7	+8.9
	2003	1.30	4,053	-1.5	41.8	-2.1
	2004	1.34	4,105	+1.3	42.0	+0.5
	2005	1.43	4,364	+6.3	44.3	+5.5
Robbery	2001	1.99	6,492	+2.6	68.2	+2.7
	2002	2.09	6,818	+5.0	70.8	+3.8
	2003	2.08	6,511	-4.5	67.1	-5.2
	2004	2.17	6,646	+2.1	67.9	+1.2
	2005	2.37	7,254	+9.1	73.6	+8.4
Aggravated Assault, Aggravated Battery, Attempted Murder & Ritual Mutilation	2001	7.31	23,884	-1.6	250.8	-1.6
	2002	7.03	22,923	-4.0	237.9	-5.1
	2003	6.98	21,828	-4.8	224.9	-5.5
	2004	7.52	23,069	+5.7	235.8	+4.8
	2005	7.95	24,330	+5.5	247.0	+4.7
Violent Crimes Subtotal	2001	10.54	34,425	-0.4	361.5	-0.4
	2002	10.48	34,166	-0.8	354.6	-1.9
	2003	10.45	32,689	-4.3	336.9	-5.0
	2004	11.13	34,152	+4.5	349.0	+3.6
	2005	11.85	36,268	+6.2	368.1	+5.5
Burglary	2001	16.27	53,131	-0.7	557.9	-0.7
	2002	17.13	55,826	+5.1	579.5	+3.9
	2003	17.04	53,281	-4.6	549.1	-5.2
	2004	16.81	51,546	-3.3	526.8	-4.1
	2005	17.04	52,164	+1.2	529.5	+0.5
Theft	2001	65.98	215,536	0.0	2,263.2	0.0
	2002	65.60	213,788	-0.8	2,219.1	-1.9
	2003	65.74	205,608	-3.8	2,118.8	-4.5
	2004	65.64	201,345	-2.1	2,057.8	-2.9
	2005	64.89	198,678	-1.3	2,016.7	-2.0
Motor Vehicle Theft	2001	6.61	21,589	+3.0	226.7	+3.0
	2002	6.17	20,120	-6.8	208.8	-7.9
	2003	6.17	19,290	-4.1	198.8	-4.8
	2004	5.87	18,008	-6.6	184.0	-7.4
	2005	5.64	17,259	-4.2	175.2	-4.8
Arson	2001	0.60	1,970	+4.5	20.7	+4.5
	2002	0.61	1,973	+0.2	20.5	-1.0
	2003	0.61	1,902	-3.6	19.6	-4.4
	2004	0.55	1,675	-11.9	17.1	-12.8
	2005	0.59	1,799	+7.4	18.3	+7.0
Property Crimes Subtotal	2001	89.46	292,226	+0.1	3,068.5	+0.1
	2002	89.52	291,707	-0.2	3,027.9	-1.3
	2003	89.55	280,081	-4.0	2,886.2	-4.7
	2004	88.86	272,571	-2.7	2,785.8	-3.5
	2005	88.15	269,900	-1.0	2,739.6	-1.7
Crime Index Total	2001	100.00	326,651	+0.1	3,430.0	+0.1
	2002	100.00	325,873	-0.2	3,382.5	-1.4
	2003	100.00	312,770	-4.0	3,223.0	-4.7
	2004	100.00	306,726	-1.9	3,134.8	-2.7
	2005	100.00	306,168	-0.2	3,107.8	-0.9

Offenses reported in the downstate area account for 63.7% of the state crime index offense total.

Chicago Police Department Crime Index Offenses 2001-2005

INDEX OFFENSE	YEAR	% OF TOTAL	NUMBER OF OFFENSES	% VOLUME CHANGE	CRIME RATE PER 100,000	% RATE CHANGE
Murder	2001	0.33	665	+5.4	23.0	+5.5
	2002	0.34	651	-2.1	22.5	-2.2
	2003	0.32	598	-8.1	20.7	-8.0
	2004	0.25	448	-25.1	15.6	-24.6
	2005	0.27	446	-0.4	15.6	0.0
Criminal Sexual Assault	2001	0.99	1,976	-1.2	68.2	-1.3
	2002	1.05	2,023	+2.4	69.9	+2.5
	2003	0.97	1,799	-11.1	62.4	-10.7
	2004	0.98	1,757	-2.3	61.2	-1.9
	2005	0.97	1,618	-7.9	56.5	-7.7
Robbery	2001	9.24	18,473	-4.5	637.9	-4.5
	2002	9.59	18,530	+0.3	640.2	+0.4
	2003	9.35	17,302	-6.6	600.3	-6.2
	2004	8.88	15,965	-7.7	556.4	-7.3
	2005	9.52	15,961	0.0	557.7	+0.2
Aggravated Assault, Aggravated Battery, Attempted Murder & Ritual Mutilation	2001	12.80	25,571	-3.7	883.0	-3.7
	2002	11.85	22,905	-10.4	791.3	-10.4
	2003	10.69	19,784	-13.6	686.4	-13.3
	2004	10.47	18,820	-4.9	656.0	-4.4
	2005	10.70	17,934	-4.7	626.6	-4.5
Violent Crimes Subtotal	2001	23.36	46,685	-3.8	1,612.0	-3.8
	2002	22.82	44,109	-5.5	1,523.9	-5.5
	2003	21.34	39,483	-10.5	1,369.9	-10.1
	2004	20.58	36,990	-6.3	1,289.2	-5.9
	2005	21.45	35,959	-2.8	1,256.5	-2.5
Burglary	2001	13.02	26,026	-8.1	898.7	-8.1
	2002	13.25	25,614	-1.6	884.9	-1.5
	2003	13.54	25,064	-2.1	869.6	-1.7
	2004	13.65	24,542	-2.1	855.4	-1.6
	2005	15.09	25,298	+3.1	883.9	+3.3
Theft	2001	49.31	98,544	-7.1	3,402.7	-7.1
	2002	50.43	97,484	-1.1	3,367.9	-1.0
	2003	52.30	96,779	-0.7	3,357.7	-0.3
	2004	52.66	94,651	-2.2	3,299.0	-1.7
	2005	49.64	83,235	-12.1	2,908.3	-11.8
Motor Vehicle Theft	2001	13.80	27,571	-7.3	952.0	-7.3
	2002	12.98	25,096	-9.0	867.0	-8.9
	2003	12.31	22,779	-9.2	790.3	-8.8
	2004	12.68	22,788	0.0	794.3	+0.5
	2005	13.41	22,491	-1.3	785.9	-1.1
Arson	2001	0.50	1,006	-5.3	34.7	-5.4
	2002	0.53	1,016	+1.0	35.1	+1.2
	2003	0.51	947	-6.8	32.9	-6.3
	2004	0.43	772	-18.5	26.9	-18.2
	2005	0.41	683	-11.5	23.9	-11.2
Property Crimes Subtotal	2001	76.64	153,147	-7.3	5,288.2	-7.3
	2002	77.18	149,210	-2.6	5,155.0	-2.5
	2003	78.66	145,569	-2.4	5,050.5	-2.0
	2004	79.42	142,756	-1.9	4,975.6	-1.5
	2005	78.55	131,707	-7.7	4,602.0	-7.5
Crime Index Total	2001	100.00	199,832	-6.5	6,900.2	-6.5
	2002	100.00	193,319	-3.3	6,678.8	-3.2
	2003	100.00	185,052	-4.3	6,420.4	-3.9
	2004	100.00	179,743	-2.9	6,264.7	-2.4
	2005	100.00	167,666	-6.7	5,858.5	-6.5

Offenses reported by the Chicago Police Department account for 35.4% of the state crime index offense total.

Cook County Crime Index Offenses 2001-2005

INDEX OFFENSE	YEAR	% OF TOTAL	NUMBER OF OFFENSES	% VOLUME CHANGE	CRIME RATE PER 100,000	% RATE CHANGE
Murder	2001	0.26	757	+6.5	14.1	+6.8
	2002	0.26	736	-2.8	13.7	-2.8
	2003	0.26	695	-5.6	12.9	-5.8
	2004	0.21	554	-20.3	10.4	-19.4
	2005	0.22	546	-1.4	10.2	-1.9
Criminal Sexual Assault	2001	0.90	2,612	-1.3	48.6	-1.2
	2002	0.96	2,724	+4.3	50.6	+4.1
	2003	0.90	2,425	-11.0	45.2	-10.7
	2004	0.91	2,397	-1.2	45.0	-0.4
	2005	0.95	2,340	-2.4	43.7	-2.9
Robbery	2001	7.11	20,732	-4.0	385.6	-4.0
	2002	7.39	20,940	+1.0	389.0	+0.9
	2003	7.33	19,761	-5.6	368.2	-5.3
	2004	7.01	18,365	-7.1	344.7	-6.4
	2005	7.52	18,616	+1.4	347.9	+0.9
Aggravated Assault, Aggravated Battery, Attempted Murder & Ritual Mutilation	2001	10.43	30,414	-3.5	565.7	-3.5
	2002	9.54	27,056	-11.0	502.6	-11.2
	2003	8.75	23,584	-12.8	439.4	-12.6
	2004	8.68	22,753	-3.5	427.1	-2.8
	2005	9.00	22,287	-2.0	416.5	-2.5
Violent Crimes Subtotal	2001	18.70	54,515	-3.5	1,013.9	-3.5
	2002	18.15	51,456	-5.6	955.9	-5.7
	2003	17.24	46,465	-9.7	865.7	-9.4
	2004	16.81	44,069	-5.2	827.2	-4.4
	2005	17.68	43,789	-0.6	818.2	-1.1
Burglary	2001	13.26	38,661	-6.4	719.0	-6.4
	2002	13.71	38,867	+0.5	722.0	+0.4
	2003	13.75	37,047	-4.7	690.3	-4.4
	2004	13.78	36,111	-2.5	677.8	-1.8
	2005	14.95	37,022	+2.5	691.8	+2.1
Theft	2001	54.99	160,347	-4.8	2,982.2	-4.8
	2002	55.82	158,253	-1.3	2,939.8	-1.4
	2003	57.15	154,040	-2.7	2,870.0	-2.4
	2004	57.55	150,871	-2.1	2,831.8	-1.3
	2005	55.13	136,502	-9.5	2,550.7	-9.9
Motor Vehicle Theft	2001	12.56	36,627	-6.6	681.2	-6.6
	2002	11.82	33,523	-8.5	622.7	-8.6
	2003	11.35	30,597	-8.7	570.1	-8.4
	2004	11.43	29,959	-2.1	562.3	-1.4
	2005	11.81	29,248	-2.4	546.5	-2.8
Arson	2001	0.49	1,438	-2.4	26.7	-2.6
	2002	0.50	1,429	-0.6	26.5	-0.7
	2003	0.51	1,373	-3.9	25.6	-3.4
	2004	0.43	1,132	-17.6	21.2	-17.2
	2005	0.42	1,045	-7.7	19.5	-8.0
Property Crimes Subtotal	2001	81.30	237,073	-5.3	4,409.2	-5.3
	2002	81.85	232,072	-2.1	4,311.0	-2.2
	2003	82.76	223,057	-3.9	4,155.9	-3.6
	2004	83.19	218,073	-2.2	4,093.1	-1.5
	2005	82.32	203,817	-6.5	3,808.6	-7.0
Crime Index Total	2001	100.00	291,588	-5.0	5,423.1	-5.0
	2002	100.00	283,528	-2.8	5,266.9	-2.9
	2003	100.00	269,522	-4.9	5,021.7	-4.7
	2004	100.00	262,142	-2.7	4,920.3	-2.0
	2005	100.00	247,606	-5.5	4,626.8	-6.0

Offenses reported in Cook County account for 52.3% of the state crime index offense total.

Suburban Cook County Crime Index Offenses 2001-2005

INDEX OFFENSE	YEAR	% OF TOTAL	NUMBER OF OFFENSES	% VOLUME CHANGE	CRIME RATE PER 100,000	% RATE CHANGE
Murder	2001	0.10	92	+15.0	3.7	+15.6
	2002	0.09	85	-7.6	3.4	-8.1
	2003	0.11	97	+14.1	3.9	+14.7
	2004	0.13	106	+9.3	4.3	+10.3
	2005	0.13	100	-5.7	4.0	-7.0
Criminal Sexual Assault	2001	0.69	636	-1.4	25.6	-1.5
	2002	0.78	701	+10.2	28.2	+10.2
	2003	0.74	626	-10.7	25.2	-10.6
	2004	0.78	640	+2.2	26.0	+3.2
	2005	0.90	722	+12.8	29.0	+11.5
Robbery	2001	2.46	2,259	+0.4	91.1	+0.4
	2002	2.67	2,410	+6.7	96.8	+6.3
	2003	2.91	2,459	+2.0	99.0	+2.3
	2004	2.91	2,400	-2.4	97.6	-1.4
	2005	3.32	2,655	+10.6	106.6	+9.2
Aggravated Assault, Aggravated Battery, Attempted Murder & Ritual Mutilation	2001	5.28	4,843	-2.5	195.2	-2.5
	2002	4.60	4,151	-14.3	166.8	-14.5
	2003	4.50	3,800	-8.5	152.9	-8.3
	2004	4.77	3,933	+3.5	160.0	+4.6
	2005	5.45	4,353	+10.7	174.8	+9.3
Violent Crimes Subtotal	2001	8.53	7,830	-1.4	315.6	-1.4
	2002	8.14	7,347	-6.2	295.2	-6.5
	2003	8.27	6,982	-5.0	281.0	-4.8
	2004	8.59	7,079	+1.4	287.9	+2.5
	2005	9.79	7,830	+10.6	314.5	+9.2
Burglary	2001	13.77	12,635	-2.6	509.3	-2.7
	2002	14.69	13,253	+4.9	532.5	+4.6
	2003	14.19	11,983	-9.6	482.2	-9.4
	2004	14.04	11,569	-3.5	470.5	-2.4
	2005	14.67	11,724	+1.3	470.9	+0.1
Theft	2001	67.36	61,803	-0.8	2,491.3	-0.8
	2002	67.36	60,769	-1.7	2,441.8	-2.0
	2003	67.79	57,261	-5.8	2,304.3	-5.6
	2004	68.23	56,220	-1.8	2,286.6	-0.8
	2005	66.63	53,267	-5.3	2,139.6	-6.4
Motor Vehicle Theft	2001	9.87	9,056	-4.5	365.1	-4.5
	2002	9.34	8,427	-6.9	338.6	-7.3
	2003	9.26	7,818	-7.2	314.6	-7.1
	2004	8.70	7,171	-8.3	291.7	-7.3
	2005	8.45	6,757	-5.8	271.4	-7.0
Arson	2001	0.47	432	+5.1	17.4	+4.8
	2002	0.46	413	-4.4	16.6	-4.6
	2003	0.50	426	+3.1	17.1	+3.0
	2004	0.44	360	-15.5	14.6	-14.6
	2005	0.45	362	+0.6	14.5	-0.7
Property Crimes Subtotal	2001	91.47	83,926	-1.5	3,383.1	-1.5
	2002	91.86	82,862	-1.3	3,329.5	-1.6
	2003	91.73	77,488	-6.5	3,118.3	-6.3
	2004	91.41	75,317	-2.8	3,063.3	-1.8
	2005	90.21	72,110	-4.3	2,896.4	-5.4
Crime Index Total	2001	100.00	91,756	-1.5	3,698.8	-1.5
	2002	100.00	90,209	-1.7	3,624.7	-2.0
	2003	100.00	84,470	-6.4	3,399.3	-6.2
	2004	100.00	82,399	-2.5	3,351.4	-1.4
	2005	100.00	79,940	-3.0	3,210.9	-4.2

Offenses reported in suburban Cook County account for 16.9% of the state crime index offense total.

Collar Counties Crime Index Offenses 2001-2005

INDEX OFFENSE	YEAR	% OF TOTAL	NUMBER OF OFFENSES	% VOLUME CHANGE	CRIME RATE PER 100,000	% RATE CHANGE
Murder	2001	0.08	57	+23.9	2.1	+23.5
	2002	0.09	63	+10.5	2.2	+4.8
	2003	0.09	63	0.0	2.2	0.0
	2004	0.10	67	+6.3	2.3	+4.5
	2005	0.09	62	-7.5	2.1	-8.7
Criminal Sexual Assault	2001	0.97	700	+4.5	25.8	+4.5
	2002	1.10	782	+11.7	27.8	+7.8
	2003	1.19	831	+6.3	28.9	+4.0
	2004	1.20	836	+0.6	28.4	-1.7
	2005	1.22	860	+2.9	28.6	+0.7
Robbery	2001	1.76	1,275	+10.2	47.0	+10.3
	2002	1.55	1,096	-14.0	39.0	-17.0
	2003	1.69	1,181	+7.8	41.1	+5.4
	2004	1.66	1,158	-1.9	39.4	-4.1
	2005	1.78	1,247	+7.7	41.5	+5.3
Aggravated Assault, Aggravated Battery, Attempted Murder & Ritual Mutilation	2001	5.61	4,056	-3.7	149.4	-3.7
	2002	5.60	3,965	-2.2	140.9	-5.7
	2003	5.02	3,508	-11.5	122.1	-13.3
	2004	4.96	3,456	-1.5	117.5	-3.8
	2005	5.11	3,588	+3.8	119.4	+1.6
Violent Crimes Subtotal	2001	8.42	6,088	0.0	224.2	0.0
	2002	8.34	5,906	-3.0	209.9	-6.4
	2003	8.00	5,583	-5.5	194.3	-7.4
	2004	7.91	5,517	-1.2	187.6	-3.4
	2005	8.20	5,757	+4.4	191.6	+2.1
Burglary	2001	12.88	9,310	-8.9	342.9	-8.9
	2002	13.50	9,558	+2.7	339.7	-0.9
	2003	13.41	9,365	-2.0	325.9	-4.1
	2004	13.67	9,530	+1.8	324.1	-0.6
	2005	13.62	9,563	+0.3	318.3	-1.8
Theft	2001	73.24	52,933	+1.3	1,949.7	+1.3
	2002	72.84	51,564	-2.6	1,832.5	-6.0
	2003	73.18	51,092	-0.9	1,778.0	-3.0
	2004	73.29	51,090	0.0	1,737.7	-2.3
	2005	73.37	51,519	+0.8	1,714.8	-1.3
Motor Vehicle Theft	2001	4.80	3,466	-5.7	127.7	-5.7
	2002	4.58	3,242	-6.5	115.2	-9.8
	2003	4.61	3,216	-0.8	111.9	-2.9
	2004	4.44	3,095	-3.8	105.3	-5.9
	2005	4.15	2,917	-5.8	97.1	-7.8
Arson	2001	0.66	477	-9.8	17.6	-9.7
	2002	0.74	522	+9.4	18.6	+5.7
	2003	0.80	557	+6.7	19.4	+4.3
	2004	0.69	481	-13.6	16.4	-15.5
	2005	0.66	465	-3.3	15.5	-5.5
Property Crimes Subtotal	2001	91.58	66,186	-0.7	2,437.8	-0.7
	2002	91.66	64,886	-2.0	2,306.0	-5.4
	2003	92.00	64,230	-1.0	2,235.2	-3.1
	2004	92.09	64,196	-0.1	2,183.4	-2.3
	2005	91.80	64,464	+0.4	2,145.7	-1.7
Crime Index Total	2001	100.00	72,274	-0.7	2,662.0	-0.7
	2002	100.00	70,792	-2.1	2,515.9	-5.5
	2003	100.00	69,813	-1.4	2,429.5	-3.4
	2004	100.00	69,713	-0.1	2,371.1	-2.4
	2005	100.00	70,221	+0.7	2,337.3	-1.4

Offenses reported in the collar counties account for 14.8% of the state crime index offense total.

Urban Counties Crime Index Offenses 2001-2005

INDEX OFFENSE	YEAR	% OF TOTAL	NUMBER OF OFFENSES	% VOLUME CHANGE	CRIME RATE PER 100,000	% RATE CHANGE
Murder	2001	0.12	135	+19.5	5.1	+21.4
	2002	0.11	134	-0.7	5.0	-2.0
	2003	0.09	102	-23.9	3.8	-24.0
	2004	0.11	120	+17.6	4.5	+18.4
	2005	0.13	143	+19.2	5.3	+17.8
Criminal Sexual Assault	2001	1.45	1,682	+2.8	62.9	+2.8
	2002	1.58	1,883	+12.0	70.1	+11.4
	2003	1.50	1,704	-9.5	63.0	-10.1
	2004	1.64	1,799	+5.6	67.3	+6.8
	2005	1.67	1,857	+3.2	68.9	+2.4
Robbery	2001	2.26	2,628	-0.1	98.3	-0.1
	2002	2.45	2,912	+10.8	108.4	+10.3
	2003	2.22	2,515	-13.6	93.0	-14.2
	2004	2.48	2,728	+8.5	102.0	+9.7
	2005	2.66	2,953	+8.2	109.6	+7.5
Aggravated Assault, Aggravated Battery, Attempted Murder & Ritual Mutilation	2001	9.05	10,506	-1.9	393.1	-1.9
	2002	8.72	10,377	-1.2	386.5	-1.7
	2003	8.80	9,978	-3.8	368.8	-4.6
	2004	10.17	11,170	+11.9	417.8	+13.3
	2005	10.30	11,416	+2.2	423.7	+1.4
Violent Crimes Subtotal	2001	12.88	14,951	-0.9	559.4	-0.9
	2002	12.86	15,306	+2.4	570.0	+1.9
	2003	12.60	14,299	-6.6	528.5	-7.3
	2004	14.41	15,817	+10.6	591.7	+12.0
	2005	14.76	16,369	+3.5	607.6	+2.7
Burglary	2001	19.41	22,520	+3.4	842.6	+3.4
	2002	20.17	23,998	+6.6	893.7	+6.1
	2003	20.03	22,718	-5.3	839.7	-6.0
	2004	19.35	21,243	-6.5	794.6	-5.4
	2005	19.52	21,636	+1.9	803.1	+1.1
Theft	2001	60.70	70,445	-1.2	2,635.7	-1.2
	2002	60.62	72,133	+2.4	2,686.4	+1.9
	2003	60.95	69,143	-4.1	2,555.8	-4.9
	2004	60.09	65,976	-4.6	2,467.9	-3.4
	2005	59.65	66,130	+0.2	2,454.6	-0.5
Motor Vehicle Theft	2001	6.33	7,346	+17.0	274.8	+17.0
	2002	5.74	6,836	-6.9	254.6	-7.4
	2003	5.87	6,659	-2.6	246.1	-3.3
	2004	5.63	6,184	-7.1	231.3	-6.0
	2005	5.45	6,043	-2.3	224.3	-3.0
Arson	2001	0.68	789	+8.1	29.5	+8.1
	2002	0.61	725	-8.1	27.0	-8.5
	2003	0.55	623	-14.1	23.0	-14.8
	2004	0.53	582	-6.6	21.8	-5.2
	2005	0.62	689	+18.4	25.6	+17.4
Property Crimes Subtotal	2001	87.12	101,100	+1.0	3,782.6	+1.0
	2002	84.62	100,692	-0.4	3,750.0	-0.9
	2003	87.40	99,143	-1.5	3,664.7	-2.3
	2004	85.59	93,985	-5.2	3,515.6	-4.1
	2005	85.24	94,498	+0.5	3,507.6	-0.2
Crime Index Total	2001	100.00	116,051	+0.8	4,342.0	+0.8
	2002	100.00	118,998	+2.5	4,431.7	+2.1
	2003	100.00	113,442	-4.7	4,193.2	-5.4
	2004	100.00	109,802	-3.2	4,107.3	-2.0
	2005	100.00	110,867	+1.0	4,115.2	+0.2

Offenses reported in urban counties account for 23.4% of the state crime index offense total.

Rural Counties Crime Index Offenses 2001-2005

INDEX OFFENSE	YEAR	% OF TOTAL	NUMBER OF OFFENSES	% VOLUME CHANGE	CRIME RATE PER 100,000	% RATE CHANGE
Murder	2001	0.07	33	+22.2	2.0	+25.0
	2002	0.06	28	-15.2	1.7	-15.0
	2003	0.08	35	+25.0	2.1	+23.5
	2004	0.08	38	+8.6	2.3	+9.5
	2005	0.03	15	-60.5	0.9	-60.9
Criminal Sexual Assault	2001	1.53	714	-2.9	43.1	-2.9
	2002	1.63	749	+4.9	45.5	+5.6
	2003	1.98	892	+19.1	54.4	+19.6
	2004	1.85	830	-7.0	49.2	-9.6
	2005	2.05	924	+11.3	54.8	+11.4
Robbery	2001	0.71	330	+15.0	19.9	+15.0
	2002	0.87	399	+20.9	24.2	+21.6
	2003	0.79	356	-10.8	21.7	-10.3
	2004	0.80	359	+0.8	21.3	-1.8
	2005	0.89	399	+11.1	23.6	+10.8
Aggravated Assault, Aggravated Battery, Attempted Murder & Ritual Mutilation	2001	9.62	4,477	+2.0	270.5	+2.0
	2002	9.66	4,429	-1.1	269.0	-0.6
	2003	10.09	4,541	+2.5	276.8	+2.9
	2004	10.07	4,510	-0.7	267.1	-3.5
	2005	11.02	4,969	+10.2	294.5	+10.3
Violent Crimes Subtotal	2001	11.94	5,554	+2.1	335.6	+2.1
	2002	12.23	5,605	+0.9	340.4	+1.4
	2003	12.94	5,824	+3.9	355.1	+4.3
	2004	12.81	5,737	-1.5	339.8	-4.3
	2005	13.99	6,307	+9.9	373.8	+10.0
Burglary	2001	18.62	8,663	+1.5	523.5	+1.5
	2002	19.67	9,015	+4.1	547.5	+4.6
	2003	20.47	9,212	+2.2	561.6	+2.6
	2004	20.55	9,203	-0.1	545.0	-3.0
	2005	20.49	9,236	+0.4	547.3	+0.4
Theft	2001	65.20	30,326	+2.6	1,832.5	+2.6
	2002	63.91	29,289	-3.4	1,778.9	-2.9
	2003	62.39	28,078	-4.1	1,711.7	-3.8
	2004	62.61	28,038	-0.1	1,660.5	-3.0
	2005	61.48	27,712	-1.2	1,642.3	-1.1
Motor Vehicle Theft	2001	3.65	1,700	+13.1	102.7	+13.1
	2002	3.51	1,607	-5.5	97.6	-5.0
	2003	3.54	1,595	-0.7	97.2	-0.4
	2004	3.46	1,551	-2.8	91.9	-5.5
	2005	3.42	1,540	-0.7	91.3	-0.7
Arson	2001	0.58	272	+25.9	16.4	+25.2
	2002	0.68	313	+15.1	19.0	+15.9
	2003	0.66	296	-5.4	18.0	-5.3
	2004	0.56	252	-14.9	14.9	-17.2
	2005	0.63	283	+12.3	16.8	+12.8
Property Crimes Subtotal	2001	88.06	40,961	+2.9	2,475.2	+2.9
	2002	87.77	40,224	-1.8	2,443.1	-1.3
	2003	87.06	39,181	-2.6	2,388.6	-2.2
	2004	87.19	39,044	-0.3	2,312.4	-3.2
	2005	86.01	38,771	-0.7	2,297.7	-0.6
Crime Index Total	2001	100.00	46,515	+2.8	2,810.8	+2.8
	2002	100.00	45,829	-1.5	2,783.5	-1.0
	2003	100.00	45,005	-1.8	2,743.7	-1.4
	2004	100.00	44,781	-0.5	2,652.1	-3.3
	2005	100.00	45,078	+0.7	2,671.4	+0.7

Offenses reported in rural counties account for 9.5% of the state crime index offense total.

